



PROJECT GALLERY

WWW.BIGTOPSHELTERS.COM



TABLE OF CONTENTS

Warehouses	7
Containers	12
Lunchrooms – Assembly Halls	14
Ecology Blocks	16
Installation	19
Accessories	25

WITH A BIG TOP, WE'VE GOT YOU COVERED.

Our goal is to protect your people and materials so that you can do your job. By customizing our products to meet your needs, we help you maximize growth and production. For 35 years, Big Top has made fabric structures and installed them across the world. View our gallery for inspiration on how we can build one for you.

IDEAL WORKING ENVIRONMENTS: FABRIC STRUCTURES

Unlike many conventional buildings, Big Top fabric structures offer ideal working conditions for manufacturing, office tasks, or storage of goods and equipment.



Protects personnel and equipment from harmful UV, sand, ice, hail, moisture and wind.
Tear resistant and flame retardant.



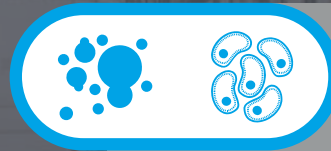
Abundant natural light



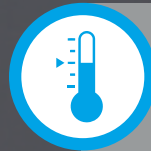
Large access doors provide airflow



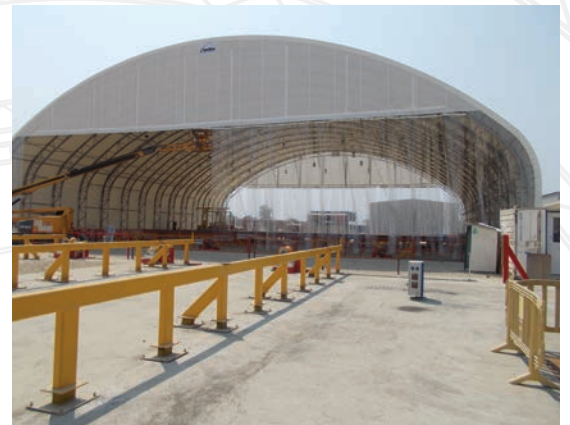
Fabric ceilings and walls absorb sound and minimize typical warehouse echoes



Healthy: Natural light keeps interior dry and free of mold and bacteria



Provides a 15 degree temperature change (cooler in the summer and retains heat in the winter)



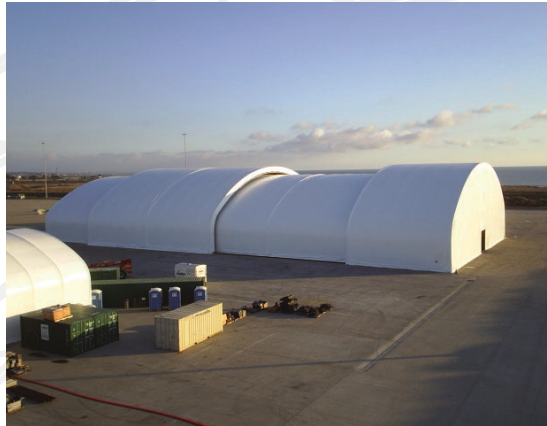
PHONE: 1.800.277.8677 • WEBSITE: BIGTOPSHELTERS.COM • EMAIL: SALES@BIGTOPSHELTERS.COM



BIG TOP FABRIC STRUCTURES ARE IDEAL FOR CONSTRUCTION SITES

Inclement weather such as rain, snow, or intense sunlight can disrupt work schedules and cause delays on building sites. Whether you need a structure for equipment maintenance, paint and blast shop, lunchrooms, or immediate warehousing, Big Top has you covered.

- *Climate Controlled Warehousing*
- *Equipment Maintenance*
- *Fabrication Facility*
- *Lunchrooms*
- *Mustering Stations*
- *Paint and Blast Shop*
- *Storage*
- *Welding Shop*





INSULATION & HVAC



INDUSTRIAL DOOR SYSTEMS

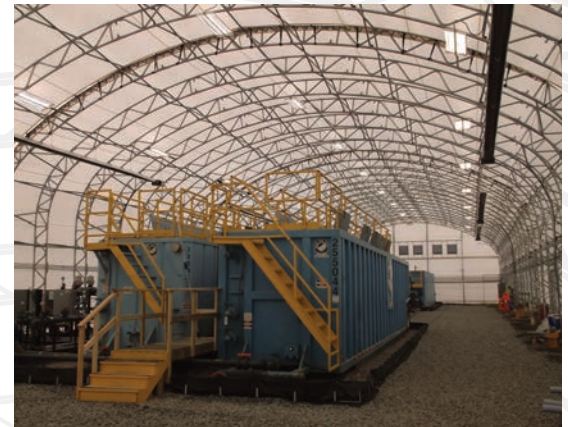


NATURAL INTERIOR LIGHT



MODULAR CONSTRUCTION

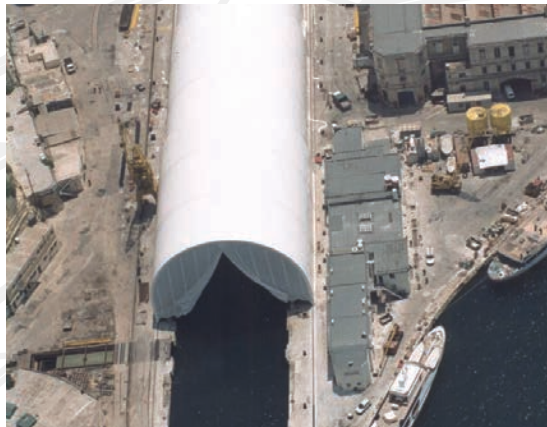
WAREHOUSES

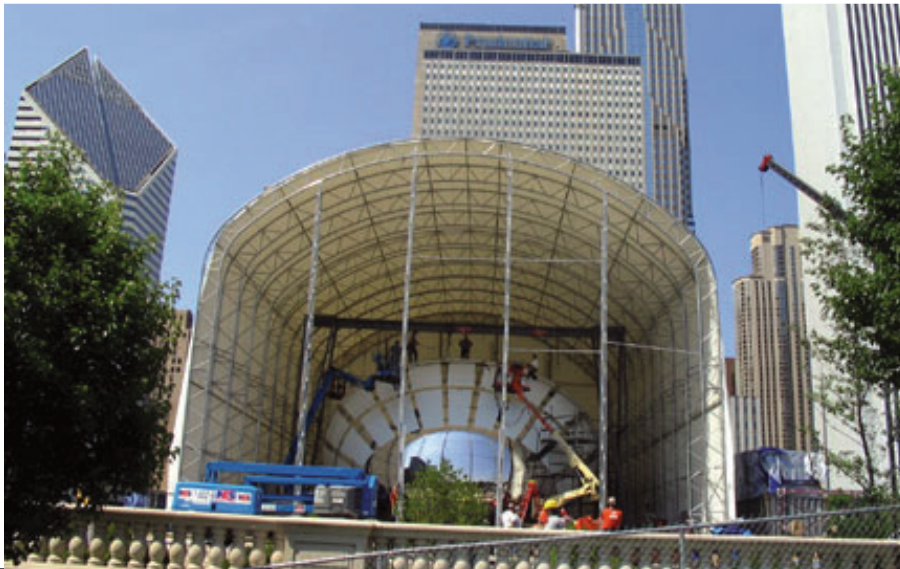
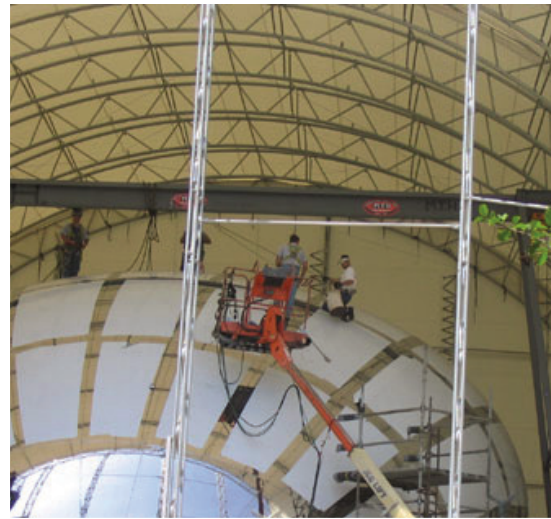




*“We have nearly \$5 million worth of equipment and use **Big Top** to cover everything. It’s worked out very well for us so we can crush rock year-round now which we couldn’t do before.”*

Terry White - Owner & President
B.E.T. - ER Mix Concrete
Hudson, FL





PROTECTING A CHICAGO LANDMARK

Cloud Gate is a public sculpture at the center of Chicago's Millennium Park. Nicknamed "The Bean" because of its shape, it was built between 2004 and 2006, measures 33 x 66 x 42 feet, and weighs 110 tons. Made up of 168 stainless steel plates welded together, its polished exterior has no visible seams. Big Top was recently contracted to provide weather protection so that "The Bean" could be restored to its original conditions.



SECURE STORAGE FOR TOOLS



OFFICE SPACE



RIDGED SIDE WALLS



ADDED HEIGHT





AIR CONDITIONING & HEATING



VERSATILE DESIGN AND EXPANSION OPTIONS



PLUG & PLAY LIGHTING/OUTLET/FANS



MODULAR FLOORING SYSTEMS





WITHSTANDS CORROSIVE ENVIRONMENTS



EFFICIENT & COST-EFFECTIVE



INCREASE STRUCTURE'S HEIGHT/SIDEWALL CLEARANCE



EASY ACCESS FOR EQUIPMENT AND DELIVERY



*“As we add **Big Top** structures our bottom line improves, profits go up and that makes everyone happy.”*

Matt Nichols - CEO
Nichols Bros Boatbuilders
Whidbey Is., WA







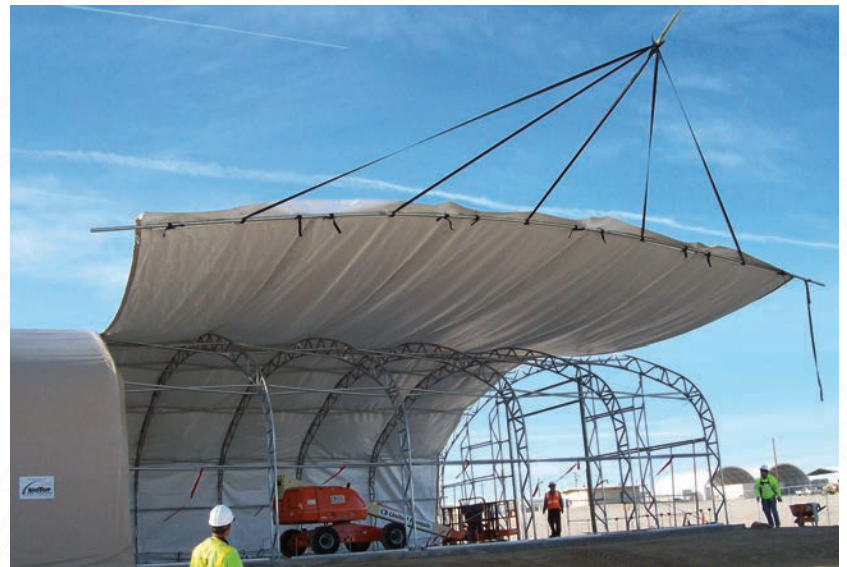
ASSEMBLE TRUSS FRAMES



STAND TRUSS/INSTALL X BRACES & PURLINS

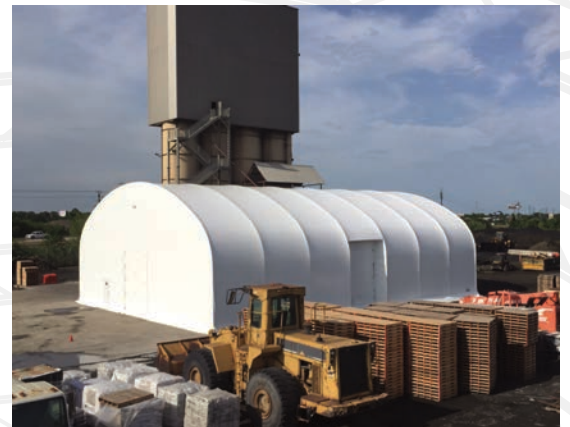


ANCHOR BASE RAIL TO THE SURFACE AREA



PULL COVER AND TENSION FABRIC

INSTALLATION





SAFETY IS OUR TOP PRIORITY

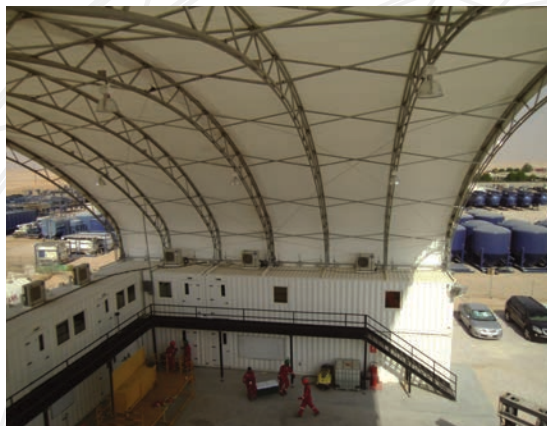
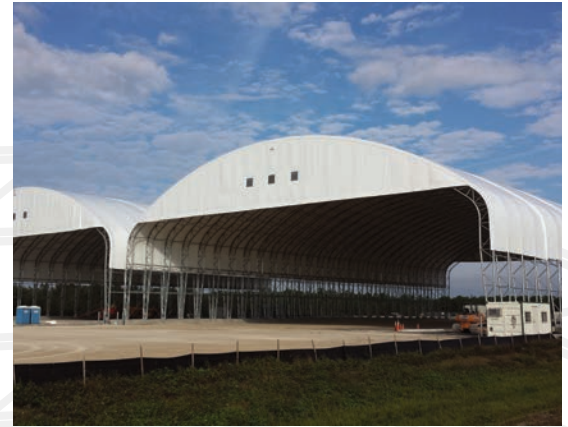
Participation. Accountability. Culture.

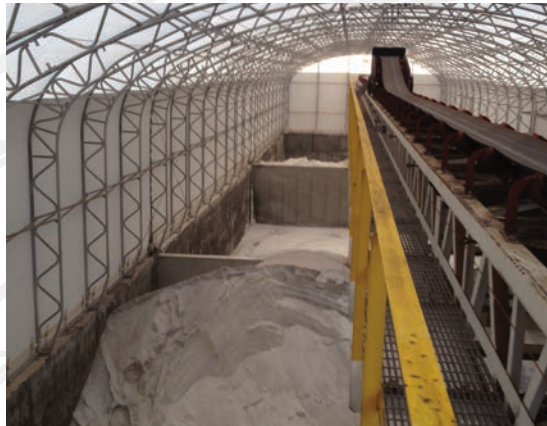
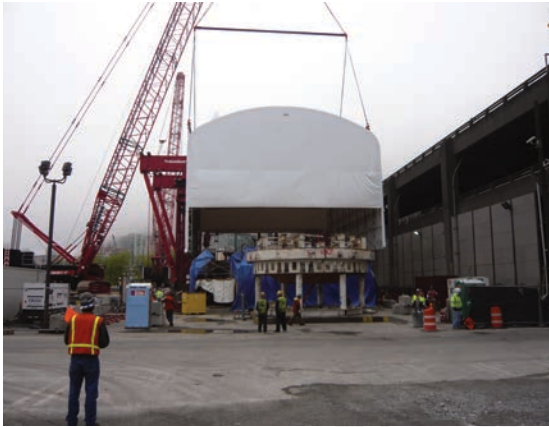
In the manufacturing industry, workplace safety must be at the forefront of everything a business does. At Big Top, we're leading the way. Our manufacturing plant is one of the safest in the USA and we have the certification to prove it.

As a result of our safety and health management system, Big Top has received the prestigious osha sharp certification. We strive to be a model for the industry and use our safety program to take care of our employees and customers.

Safety Initiatives:

- *Health and Safety Management System (HSE MS) in place.*
- *Forklift safety and aerial work platform safety training.*
- *OSHA 30 hour and 10 hour certified.*
- *TWIC (Transportation Worker Identification Credential) Card certified: A vital security measure that will ensure individuals who pose a threat do not gain unescorted access to secure areas of the nation's maritime transportation system. <https://www.tsa.gov/for-industry/twic>.*
- *Team members utilize personal protective equipment (PPE). Hard hats, safety vests, and steel-toed boots are required on all job sites. Other PPE utilized as needed.*
- *Regular tools and materials inspections.*





KEEP YOUR VALUABLE ASSETS UNDER THE SHADE OF A FABRIC STRUCTURE



	WITH FABRIC STRUCTURE	WITHOUT STRUCTURE
CANOPY	125°	196°
SEAT	97°	168°
NOSE	120°	144°
TARMAC	87°	140°

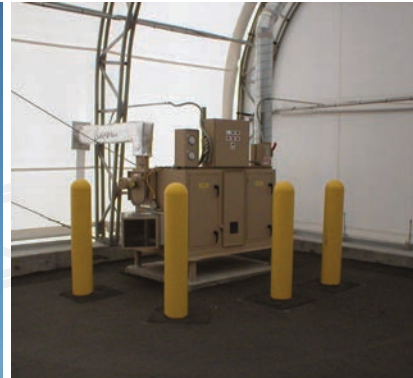
The amount of heat gain in direct sunlight on the world's most advanced aircraft is staggering. Your personnel and expensive equipment can suffer just as much and deserve the same protection the US Military has trusted for decades.



HEATERS



CRANE LIFTING PACKAGE



DEHUMIDIFICATION



HVAC



FLOORING



INSULATION



OUTLETS



METAL DOORS



EXHAUST FAN & VENT



FIRE SUPPRESSION



JACKS & WHEELS

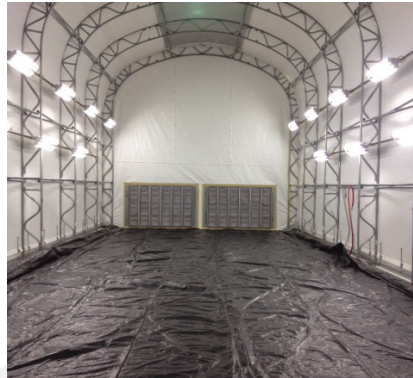


LIGHTING

ACCESSORIES



DIVIDER PANEL



FLOURESCENT LIGHTS



EXIT SIGN



PERSONNEL DOOR



DOUBLE DOOR



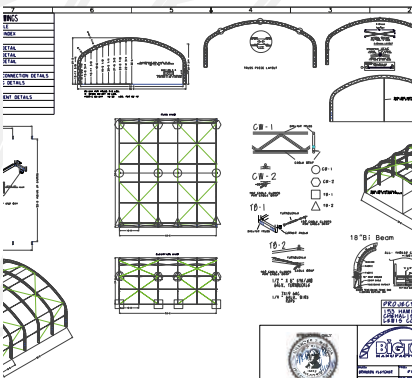
VINYL ACCESS PANEL



HYDRAULIC POWER DOOR



LIGHTING PROTECTION



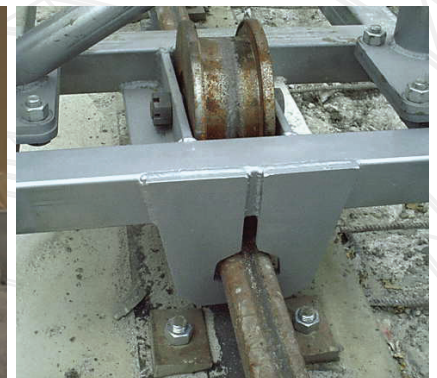
ENGINEERED DRAWINGS



WINCHES



TRIM KIT



CRANE RAIL & WHEELS

WE REALIZE THAT BUYING A FABRIC STRUCTURE ISN'T SOMETHING YOU DO EVERY DAY. HERE'S HOW WE MAKE IT EASY FOR YOU:



LET'S CONNECT

Call 1-800-277-8677 or request a quick quote at bigtopshelters.com. Tell us what you need to protect, the location, and we'll take care of the rest.



IT'S ALL ABOUT THE DETAILS

We'll dive deeper into your specific needs such as unique dimensions, fabric, end walls, door options and HVAC systems.



FINAL PROPOSAL

We will put all the pieces and parts together, send fabric samples, and line item pricing for your project.



REVIEW YOUR DESIGNS

Now it's time to see your fabric structure. Review your designs and if we need to work out some details, we'll adjust your designs until you're completely satisfied.



DECIDE TO GO BIG TOP

Once you give us the thumbs up we'll begin production on your fabric structure.



FABRICATION & SHIPPING

4-6 weeks later your shelter is ready to go and in most cases shipping time on a flatbed trailer is less than 1 week (depending on your location).



INSTALLING YOUR BIGTOP

We offer end-to-end service so if you need our help installing the structure, we average 2000 square feet per day for the perfect installation on nearly any surface.



3255 N. US 19 PERRY, FL 32347 • 1-850-584-7786/1-800-277-8677 • WWW.BIGTOPSHELTERS.COM
CALL 1-800-277-8677 TO SPEAK WITH A BIG TOP SALES EXPERT OR VIST BIGTOPSHELTERS.COM FOR MORE INFO.