



# PROJECT GALLERY

[www.bigtopshelters.com](http://www.bigtopshelters.com)



# With a **Big Top** Shelter, We've Got You Covered.

Our goal is to protect your people and materials so that you can do your job.  
By customizing our products to meet your needs, we help create an environment that enables our customers to maximize growth and production.

For 42 years, Big Top has manufactured fabric structures and installed them across the country and throughout the world.



# Table of Contents

<b>Table of Contents.....</b>	<b>3</b>	Flight-line Sunshades	20
<b>About Us.....</b>	<b>4</b>	Marine & Shipyard	22
Project Spotlights	7	Sports/Indoor Facilities	24
<b>Structure Types.....</b>	<b>8</b>	Waste & Recycling	26
Warehouse	8	Mining & Mineral	27
Container Mounted	9	Aviation	28
Lunchrooms	10	Oil & Gas	29
Ecology Block	11	Goverenment	30
Rolling Covers	12	Project Spotlights	31
Crane Rail/Mobile	13	<b>Fabric Specs.....</b>	<b>32</b>
<b>The Industry's.....</b>	<b>14</b>	<b>Accessories.....</b>	<b>34</b>
Construction	14	<b>Installation/Buying Process.....</b>	<b>36</b>
Commercial/Industrial	16	<b>The Big Top Team.....</b>	<b>38</b>
Military	18		





# 42 Years in the biz.

Since 1979, we've been the leaders in the fabric structure industry, providing customers around the world with durable, reliable, low maintenance shelter systems to protect their most important assets.

Our tension structures are composed of galvanized steel frames for maximum support and a heavy-duty PVC-vinyl fabric that is flame-retardant and rip-resistant. Built to be utilized for both permanent and temporary applications, our fabric buildings are the perfect alternative to the high costs and lengthy process that comes with the construction of a traditional building.



## IDEAL WORKING ENVIRONMENTS: FABRIC STRUCTURES

Unlike many conventional buildings Big Top fabric structures offer ideal working conditions for manufacturing, office tasks, or storage of goods and equipment.



Abundant natural light



Healthy: Natural light keeps interior dry and free of mold and bacteria.



Large access doors provide airflow



Fabric ceilings and walls absorb sound and minimize typical warehouse echoes



Provides a 15 degree temperature change (cooler in the summer and retains heat in the winter)

UV

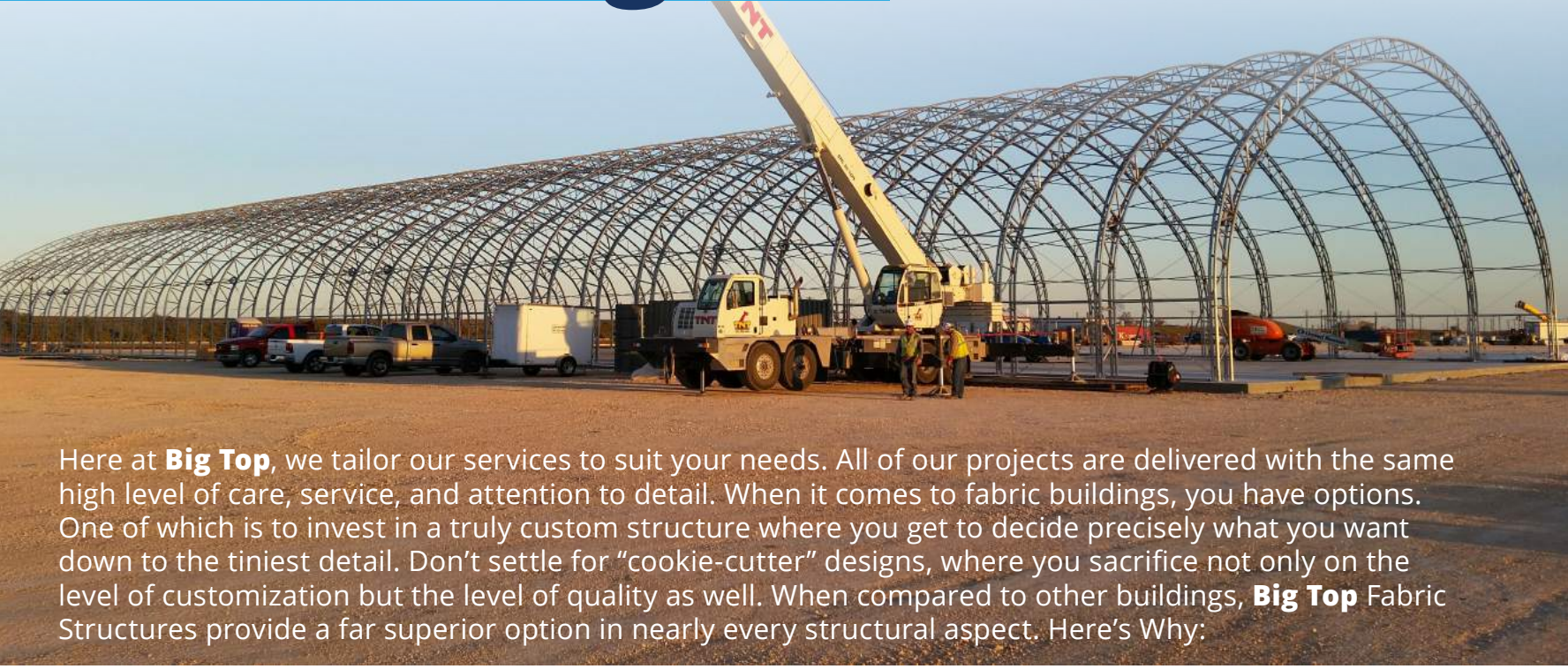


Protects personnel and equipment from harmful UV, sand, ice, hail, moisture and wind. Is tear resistant and flame retardant.





# The Big Top Advantage



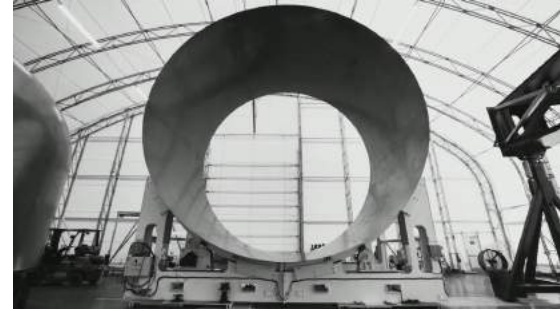
Here at **Big Top**, we tailor our services to suit your needs. All of our projects are delivered with the same high level of care, service, and attention to detail. When it comes to fabric buildings, you have options. One of which is to invest in a truly custom structure where you get to decide precisely what you want down to the tiniest detail. Don't settle for "cookie-cutter" designs, where you sacrifice not only on the level of customization but the level of quality as well. When compared to other buildings, **Big Top** Fabric Structures provide a far superior option in nearly every structural aspect. Here's Why:

- **Clear span Design** - Portable and Easy to Relocate.
- Natural Light / Translucent Design = **Energy Savings**
- Engineered for High Wind, Seismic Activity, & Snow Loads
- **Can be installed on any foundation** - Dirt, Gravel, Asphalt, Concrete, and Containers. **Low Construction Costs.**
- **Quick install time** - 2,500 sq. ft. per day
- **Tax Advantages** - Structures can classify as equipment which often results in significantly lower property taxes.
- Purchase or Lease to Own Agreements
- Fabric **blocks 99.95% of UV-A and UV-B radiation**, for an impressive UPF rating of 2,000 and a conventional rating of 50 plus.
- Full Customization with Endless Accessories.
- Comfortable working environments. Our structures are **15-20 degrees cooler in the summer and warmer in the winter** - Climate Controlled.
- Fabric is **NFPA 701 Flame Retardant**. Will not catch on fire/ self extinguish.
- Buildings do not go against the square footage of the base. (Military)
- Big Top is approved by USACE as being compliant with US Air Force Sunshade Management (AFSM), Air Force Instruction (AFI), and IBC
- **Berry Amendment Compliant**



# Big Top - Project Spotlights

**SpaceX / NASA** reached out to **Big Top** to provide infrastructure for warehousing and fabrication for the Dragon project. History was made as Crew Dragon became the first private, crewed spacecraft to reach the ISS in 2020.



## **Emerald Coast Utilities Authority (ECUA)**

53,460 square foot recycling facility. **ECUA** contacted **Big Top** to design a facility so they could eliminate their use of privately operated sectors and take control over their processing rates and how materials are filtered. The structure, which provides an ample amount of natural light during the daytime, helps reduce energy costs, and it helps **ECUA** save \$45.06 per ton of material, which is the same price it would have to pay to dispose its recyclables at a nearby landfill.



## **USAF F-35 Flight-line Sunshade Program**

The **USAF** chose **Big Top** to cover the fighter squadron's aircraft at military bases throughout the world. Our sunshades ensure mission readiness, saves money and man-hours, and adds years of life to the aircraft's paint cycle and electronics.

A recent study showed that 18 **Big Top** sunshades cost less than one airplane metal hangar. And, they are significantly faster to build. Maintenance can be done directly on the flight line while protecting planes and personnel.

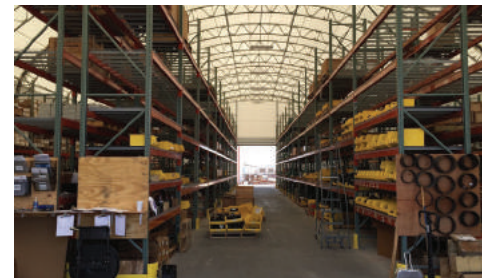
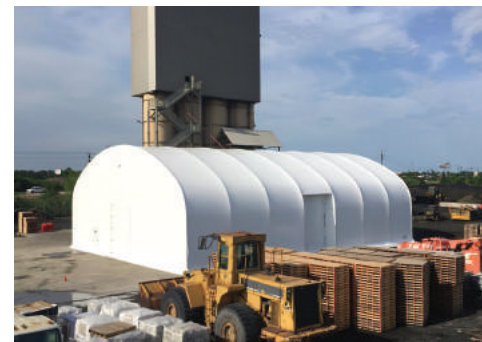




# Warehouse Structures

**Big Top** Shelters are the perfect solution your warehousing needs:

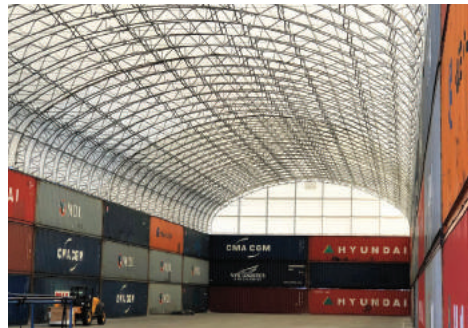
- Clearspan Design
- Industry-best lead times
- Low Construction Costs
- Protects equipment, materials, and personnel from the extreme heat, rain, wind, & snow.





# Container Mounted Structures

- Conex's can be used for offices, tool rooms, and storage for materials and parts.
- Economical Storage Solution/Weather Protection
- Fast Installation Time





# Lunchrooms Structures

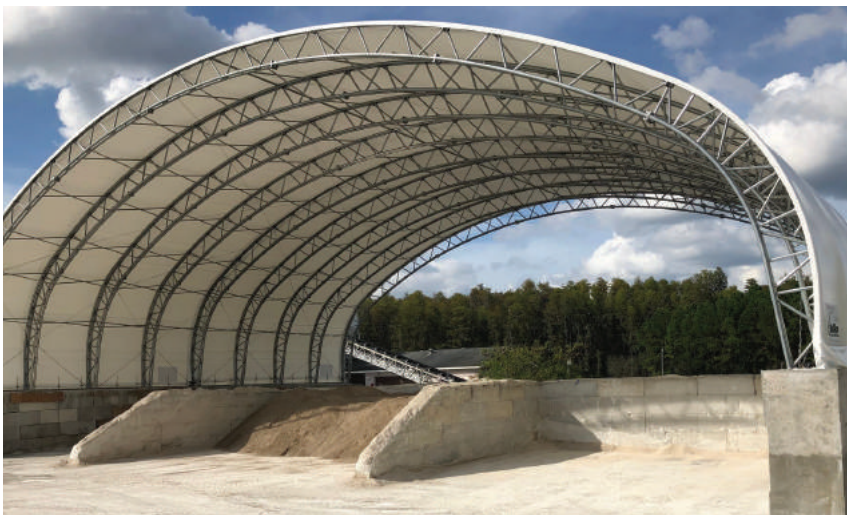
- Big Top provides lunchroom facilities to serve 40 to 4,000+ people
- Allows personnel to remain onsite. Avoid unnecessary delays.
- Can be equipped with seating, lighting, HVAC, doors, and tables.
- Quickly installed & Can be relocated if needed.





# Ecology Block Structures

- Prevents contamination from the outside elements, ensuring your materials are kept safe and dry.
- Blocks provide for foundational support, rigidity, and increased internal clearance.
- Dump trucks, loaders, and other specialized equipment can easily maneuver throughout the building for offloading and storage.





# Rolling Covers

**Big Top** was able to help Huntington Ingalls Industries realize its goal of being the shipbuilder of the future by engineering large-scale rolling covers with telescopic maneuverability. We installed an automated railing system that allows segments of the structure to slide under one another, providing access for a crane and streamlining the modular nature of the shipbuilding process. Now, prefabricated sections can be built under the shelter, then lifted out by crane and welded to the ship. Dianna Grenton, Manager of Manufacturing and Engineering, notes that the human factor element was considered when choosing Big Top because her staff needed to perform their duties safely sheltered from the heat and rain. HII's employee's now work comfortably under the fabric structure, requiring far fewer breaks and increasing production.





# Crane Liftable MOBILE

One of the most convenient features of **Big Top's** fabric structures is their mobile design. Unlike permanent buildings, our shelters can be moved around the jobsite or relocated to a different site. We can design one of our portable buildings for mobility in three different ways:

- **Crane lifting** – The structure can be lifted off its foundation with a crane and moved to a different area on your worksite.



- **Crane rails** – A rail system can be installed to easily move the structure along your footprint to allow heavy equipment to be transported in and out of the structure while you fabricate, weld, or paint and blast.



- **Telescoping** – By using a crane rail, **Big Top** can design your structure to telescope, providing you the versatility to cover different sections throughout each construction phase. The benefit of this feature is that it allows you to protect your employees and equipment at certain times, and then roll the structure back to its original state, decreasing your footprint.

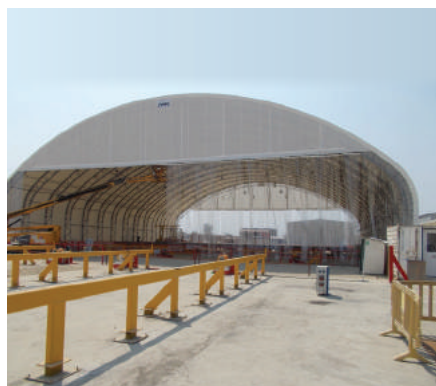




# Construction Structures

- Equipment storage and maintenance
- Warehousing
- Sandblasting and painting
- Lunchrooms/Break Tents
- Fabrication/Welding Facility

Protect your site, equipment, crews, and your bottom line. **Big Top** fabric structures offer convenient solutions for construction sites that need temporary buildings to combat complications like weather delays and hidden storage costs. Our structures can be erected quickly - *usually in matters of hours or days* - and can be secured to just about any foundation.





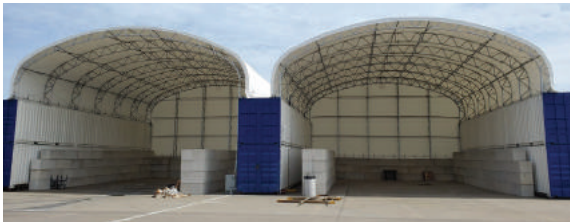




# Commercial / Industrial Applications

**Big Top** can design a building solution that provides the maximum storage & manufacturing space that is tailored to meet your exact needs.

- Warehousing
- Equipment Maintenance
- Fabrication Facility
- Storage
- Blast & Paint Shop







"We have nearly \$5 million worth of equipment and use Big Top to cover everything. It's worked out very well for us so we can crush rock year-round now which we couldn't do before."

Terry White - Owner & President  
B.E.T.-ER Mix Concrete  
Hudson, FL





# Military

- LAMS
- Flight-line Sunshades
- K9 Training Facility's
- Soft wall Expeditionary Shelters
- Guard Shacks

Since 1979, **Big Top** has provided fabric structures to military bases and battle operations all over the world. All of our structures are Berry Amendment compliant and approved by USACE as being compliant with U.S. Air Force Sunshade Management (AFSM), Air Force Instruction (AFI), and IBC. And, because our shelter systems are temporary, they will not use up the square footage of your base.









# Flight-line Sunshades



1

Our sunshades can be anchored directly to the flight line to ensure mission readiness.

2

**Big Top** is approved by USACE as being compliant with U.S. Air Force Sunshade Management (AFSM), Air Force Instruction (AFI), and IBC. All of our fabric structures are Berry Amendment compliant.

3

Protect the electronics, paint & life of the aircraft.

4

Berry Compliant.

5

**Big Top's** sunshades can save money and man-hours – one recent study showed that 18 sunshades cost less than one airplane metal hangar. And, they are significantly faster to build. Maintenance can be done directly on the flight line while protecting planes and personnel.





## KEEP YOUR VALUABLE ASSETS UNDER THE SHADE OF A FABRIC STRUCTURE

	WITH FABRIC STRUCTURE	WITHOUT STRUCTURE
CANOPY	125°	196°
SEAT	97°	168°
NOSE	120°	144°
TARMAC	87°	140°

The amount of heat gain in direct sunlight on the world's most advanced aircraft is staggering. Your personnel and expensive equipment can suffer just as much and deserve the same protection the US Military has trusted for decades.

©Copyright Big Top Fabric Structures



Big Top Fabric Structures  
bigtopshelters.com  
800.277.8677



1-850-584-7786

bigtopshelters.com

sales@bigtopshelters.com



# Marine & Shipyard Structures

Whether you have a marina, shipyard, or fabrication facility, **Big Top** fabric structures are excellent for marine applications such as repairs, maintenance and cargo protection. Our fabric buildings provide massive free span storage, unobstructed space, and exceptional clearance height, while protecting valuable marine investments from sun, wind, rain, and snow.



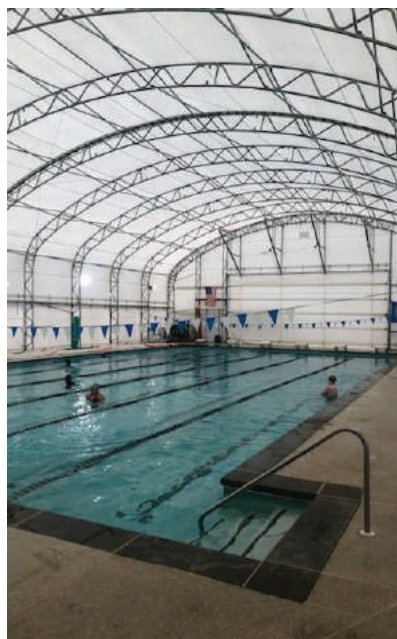






# Indoor Sports Facilities

Fabric structures from **Big Top** are ideal for the sports and recreation industry. Thanks to the translucent fabric, the interior of our structures are well-illuminated with natural sunlight, minimizing the need for electric lighting.





## Indoor Sports Facilities

365 Days a year, athletes can train in this 19,000 square foot climate controlled facility

- Track & Field
- Weightlifting
- Wrestling
- Batting Cages
- Gymnastics
- Lacross
- Rowing
- Pitching Lanes

Width - **120'**  
Length - **160'**  
Height - **40'**



## NBA ACADEMY AFRICA Saly, Senegal

### AFRICA'S FIRST NBA ACADEMY TRAINING FACILITY FOR EDUCATING & DEVELOPING AFRICA'S YOUTH

**Amadou Gallo Fall,**  
**vice president of NBA Africa:**

"This facility from Big Top will provide aspiring players from across the continent with state-of-the-art courts and training equipment under the tutelage of our NBA coaches and our world-class academic staff."

Width - **75'**  
Length - **240'**  
Height - **30'**





# Waste & Recycling Facilities

**Big Top** fabric structures used in the waste and recycling industries are designed for maximum efficiency, odor control, and durability. Protect waste and recycled materials from inclement weather to keep piles dry and expedite sorting while also creating a safe environment for workers.





# Mining & Mineral Fabric Buildings

Many mining and mineral companies have relied on **Big Top's** exceptional fabric structures for a variety of purposes including:

- Exploration
- Mineral processing
- Field operations/maintenance
- Materials and equipment storage





# Aviation

## Fabric Hangars & Sunshades

**Big Top** fabric structures make excellent hangars and sunshades for aircraft and can provide fixed-base operators (FBOs) with many benefits including cost savings. Indeed, compared to traditional T-hangars, our fabric shelters require far fewer materials to build, and they can be assembled much more quickly—at a rate of 2,500 square feet per day.





# Oil & Gas

Oil & Gas companies as well as LNG facilities all over the country turn to **Big Top** for their building needs. Our structures can be built rapidly to accommodate tight timelines and budgets.

Companies like Schlumberger, Marathon, and Exxon use **Big Top** for the following:

- Extraction and processing
- Materials and equipment storage
- Warehousing
- Blasting and painting
- Lunchrooms and safety meeting facilities
- Frac Sand Storage





# Government Applications

**Big Top Manufacturing** offers cost-effective fabric buildings for a variety of government uses. The versatility of our fabric structures makes them perfect for just about any government application. To list some examples, our products have been used for:

- Emergency relief shelters
- Fire Departments
- Medical Testing Facility
- EMS departments
- Fish Hatcheries
- Salt and sand storage
- Vehicle inspection shelters





# Big Top - Project Spotlights

**Mayflower Restoration** - Mystic Seaport utilized **Big Top** on the restoration of the Mayflower II. The **Big Top** Structure allowed the team to restore the ship without weather impeding their schedule in time for the 400th anniversary of the Pilgrims' landing.



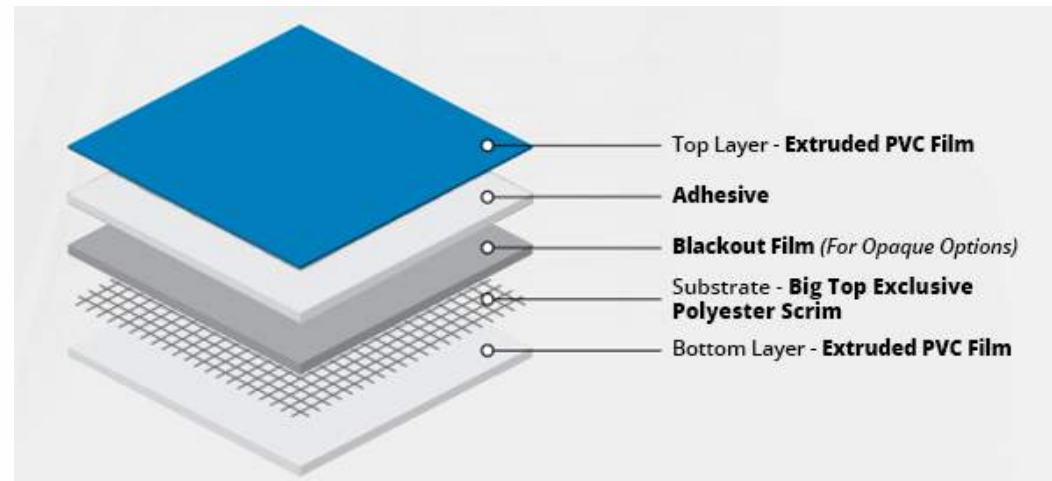
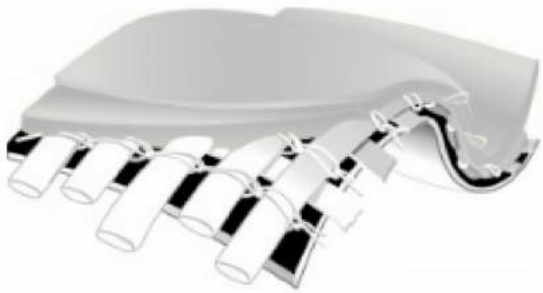
**AutoNation** Houston was expanding its footprint and needed new infrastructure to accommodate various services, so the company reached out to **Big Top** for a solution. We were able to design & build three separate structures, each customized for specific automotive services. The building size selected for each department was (Service & Repair) 84 feet wide, 30 feet long, and 28 feet tall ;(Wash & Detail ) 70 feet wide, 130 feet long, and 32 feet tall; (Auction Center) 100 feet wide, 80 feet long, and 35 feet tall.





# Fabric Specs

**Big Top** protects your most valuable assets with the toughest fabric in the industry.



- Waterproof, windproof, treated to protect against UV and mildew and is lead free
- Translucent - No artificial lighting needed for daytime use (opaque options available)
- Provides a 15-20 degree temperature change (cooler in the summer and retains heat in the winter)
- Unique polyester scrim that with a tighter weave that prevents tearing and makes our fabric 30-50% stronger
- Flame retardant / Passes NFPA - 701 Large/Small Scale Self Extinguishing Test
- Available in 18oz (21 mil), 22oz (22.5 mil) and 28oz (32 mil)
- Berry compliant (100% American made)
- Radio Frequency or Hot Air Welded for the strongest waterproof seams on the market
- Fabric blocks 99.95% of UV-A and UV-B radiation, for an impressive UPF rating of 2,000 and a conventional rating of 50 plus.



# PVC Laminated Vinyl Fabric



18 oz.

**10-15 year life**



22 oz.

**15-17 year life**



28 oz.

**20+ year life**

## Color Options



White



Tan



Blue



Green



Gray

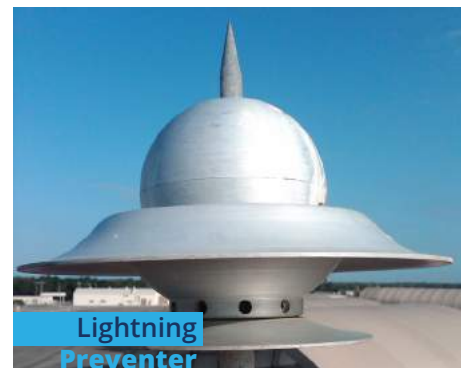
Blackout and Opaque options are available.

Printed colors on brochure are not an exact match of vinyl/laminated fabrics but a close simulation.

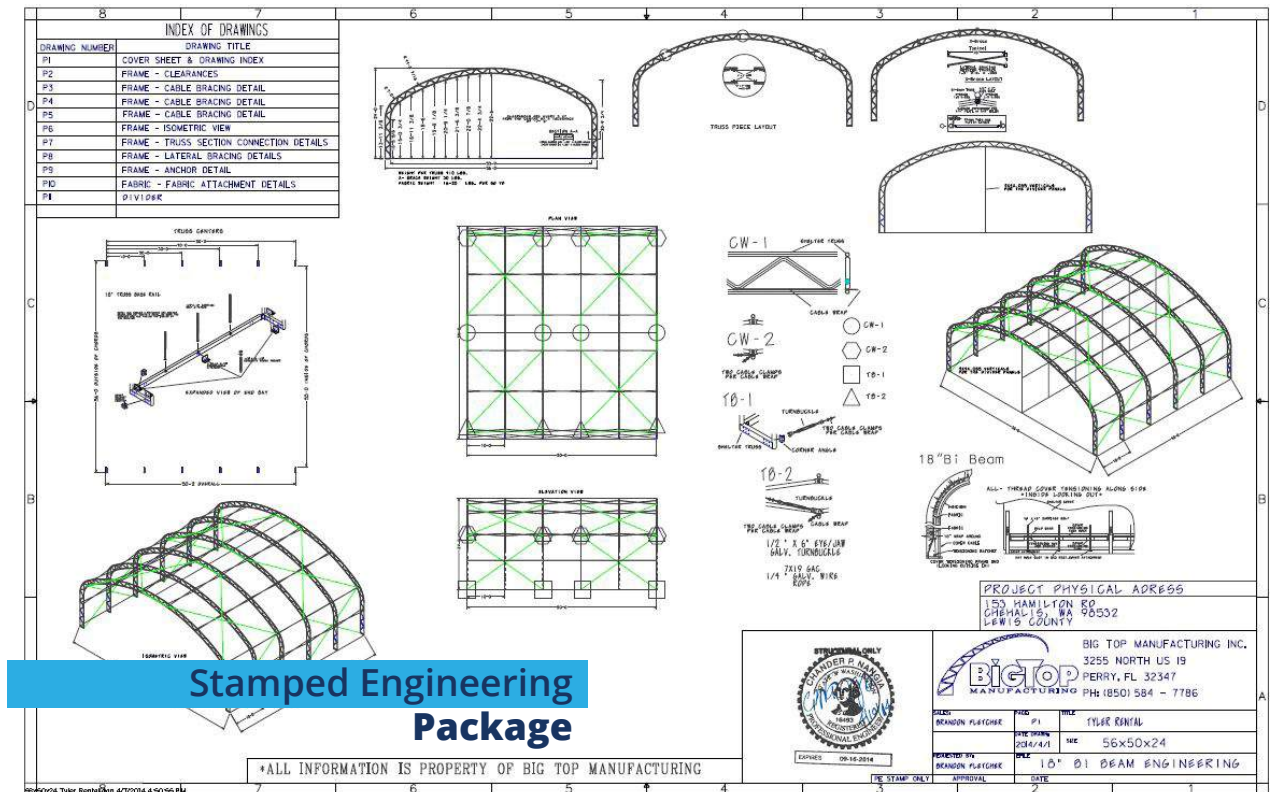
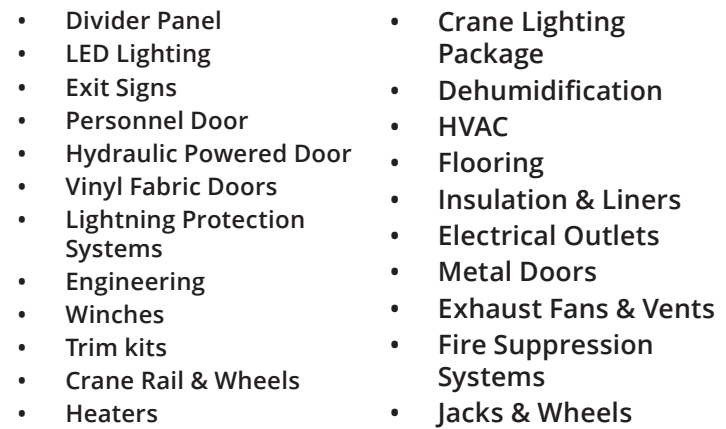
Fabric samples are available upon request.



# Accessories that we provide









# Installation made simple

At **Big Top**, we're committed to ensuring you are **100 percent satisfied** with your fabric structure. That's why, when it comes time for installation, we offer support in three ways:

1. **Customer Install** - We provide 24/7 technical support through phone, electronic, and video correspondence.
2. **Technical Assistance** - Big Top assigns a technical representative to come to your site location to assist and train your team in assembly and installation.
3. **Turnkey Install** - Our highly experienced and certified installation team will provide a no-hassle construction experience and will ensure your fabric structure is built to your exact specifications and in a timely manner.



**Assemble  
Truss Frames**



**Stand  
Truss Frames**



**Anchor Base Rail  
To Foundation**



**Install X-Braces,  
Purlins, & Cables**



**Pull Cover  
& Tension Fabric**



# We Realize That Buying A Fabric Structure Isn't Something You Do Everyday.

Here's How We Make It Easy For You:





# The BigTop Team

David Roberts  
Sales Manager



d.roberts@bigtopshelters.com  
850-672-9189

Baker Jarvis  
Sales Manager



b.jarvis@bigtopshelters.com  
850-672-9458

Brandon Fletcher  
Marketing Manager



b.fletcher@bigtopshelters.com  
850-295-4509

Adrian Peters  
Sales Representative



a.peters@bigtopshelters.com  
850-363-5531

Carl Padgett  
Sales Representative



c.padgett@bigtopshelters.com  
850-838-7458

Dustin McCormick  
Sales Representative



d.mccormick@bigtopshelters.com  
850-843-3081

Laura Grubbs  
Sales Representative



LGrubbs@bigtopshelters.com  
850-843-2484

Jay Culpepper  
Sales Representative



j.culpepper@bigtopshelters.com  
850-973-7300

Justin Hamrick  
Sales Representative



j.hamrick@bigtopshelters.com  
850-464-0119

Lance Houck  
Sales Representative



l.houck@bigtopshelters.com  
850-371-0477

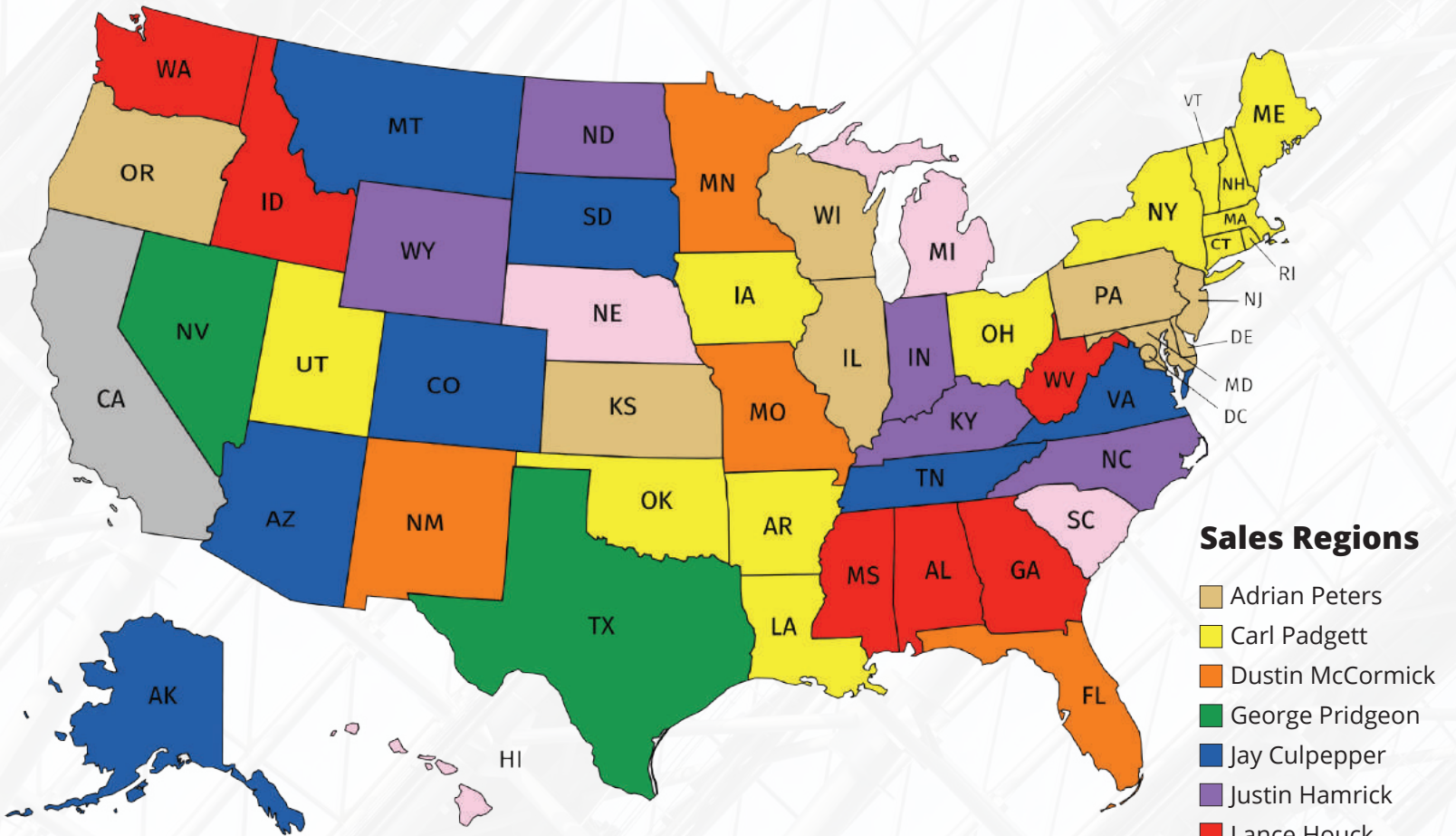
George Pridgeon  
Sales Representative



g.pridgeon@bigtopshelters.com  
850-843-1722



# Sales Region







**3255 N. US 19 PERRY, FL 32347**

**1-850-584-7786**

**WWW.BIGTOPSHELTERS.COM**

Call **1-850-584-7786** to speak with a **Big Top** sales expert  
or visit **bigtopshelters.com** for more info.