



FABRIC STRUCTURES

Protect. Produce. Grow.

WE'VE GOT YOU COVERED





CONTENTS

- 1. WE'VE GOT YOU COVERED**
- 2. THINGS TO CONSIDER**
- 3. FABRIC OPTIONS**
- 4. IT'S ALL IN THE DETAILS**
- 5. APPLICATIONS**
 - AGRICULTURE
 - AVIATION
 - COMMERCIAL/INDUSTRIAL
 - ENVIRONMENTAL
 - GOVERNMENT
 - MARINE
 - MILITARY
 - MINING
 - OIL AND GAS
 - SCHOOLS AND GYMNASIUMS
 - SPORTS AND EVENTS

WE'VE GOT YOU COVERED

BIG TOP FABRIC STRUCTURES

AS A BUSINESS LEADER, YOU RELY ON SEVERAL BASIC BUILDING BLOCKS TO ACHIEVE SUCCESS:

- Providing the resources to **PROTECT** the critical assets you need to operate: personnel, machinery, technology, goods and materials
- Creating an ideal environment to conduct daily operations, and **PRODUCE** products and services
- Procuring the right resources that allow you to **GROW** your business and prosper

And, all the while, moving at the speed of the market to remain competitive.

For over 30 years, Big Top has assisted business leaders across the globe in doing just that. Our own success is the result of our understanding that our premium fabric structures are used by our clients to achieve critical business objectives. Once installed, our custom-built structures are virtually maintenance free, stand up to the elements, and allow you to get back to business quickly. With a Big Top, you've got it covered.



YOU DON'T COMPROMISE ON QUALITY AND NEITHER DO WE.

At Big Top, our primary goal is to provide you with a dependable structure, on budget, and on schedule. You have goals to accomplish and work to be done. The last thing you want to worry about is whether a fabric structure will perform to your expectations.

- 1. WORRY-FREE** We have spent decades researching, testing and perfecting every aspect of our fabric structures. That goes for our fabric, our steel frame structures, and options like doors, HVAC, and electrical systems. Big Top building products are recognized for being the sturdiest and most dependable fabric structures in the industry – which allows you to focus your attention on your business.
- 2. PEACE OF MIND** You demand a space that's safe and comfortable. Every one of our fabric structures comes with flame retardant fabric. Our structures maintain comfortable climates throughout hot and cold seasons. And, our fabrics let in plenty of daylight - allowing our customers to forgo artificial lighting for most of the day.
- 3. WE BUILD OUR STRUCTURES TO LAST** Whether you're planning for the next 20 years, or for temporary use, Big Top structures make sense. As a decision maker in today's economic climate, you know that temporary solutions may not be so temporary. Many structures that we built decades ago are still in use.
- 4. WE STAND BEHIND OUR WORK** If you do experience a problem, Big Top is there to help. Our team is ready to assist you, answer questions and resolve issues, regardless of where your business takes you. And, we are able to offer a very generous warranty program because very few of our clients ever have to use it.
- 5. WE UNDERSTAND BUDGETS** Even when time is of the essence, you can't skimp on quality. We offer a wide range of payment options, including up to 100% financing through our commercial lending partner.

RECENT HIGHLIGHTS:

2004 - Built the world's largest dry dock cover in Gibraltar. The 125' wide structure is 63' tall and telescopes to 330' in length.

2005 - Became the prime vendor for Lockheed to build structures allowing the Global Hawk and Predator UAV's to get closer to the front line.

2005 - Built 80 structures to cover 'L' Train Tracks in Chicago and contain the removal of lead-based paint and overspray of new paint.

2009-13 - The USAF chooses Big Top to cover the 33rd Fighter Wing squadron of F35's at Eglin AFB bringing their total to over 150 structures covering aircraft worth billions.

2009-12 - Supplied all exterior event structures to support VIP facilities at FedEx Field for the Washington Redskins.

2010 - Created the branded bright yellow Legoland merchandise structure in downtown Disney.

2013 - Provided covers to Westinghouse in China for the first nuclear reactor plant constructed since Chernobyl 20 years ago.

2013-14 - Installed 17 customized structures for the US Border Patrol to cover exit inspection sites and help combat illegal trafficking of cash and weapons into Mexico.





"The Big Top team was great to work with. They knew their product, looked at what we had and recommended sizes of buildings that would be compatible with the vessels we are working on. And then they showed us how to put the buildings together, and we put them together ourselves."

Matt Nichols - CEO: Nichols Bros. Boat Builders, Whidbey Island, WA

A CONSULTATIVE APPROACH TO SERVING OUR CUSTOMERS.

For our customers, successful projects are those that come in on time and on budget. And for more than thirty years Big Top has been building structures that do exactly that. We understand the value of being a solid, long-term partner, helping you through planning, construction and beyond. That's why our deeply experienced staff is always prepared to offer proactive, hands-on consulting, assisting you with everything from design and on-site surveying to installation and tech support. Whenever and wherever you need it.

ON-SITE EVALUATION

Often, a job site will present challenges, and if needed, Big Top can provide a team of experts to survey your location to help us gather initial data, identify risks, and better prepare us to design a solution that works.

DESIGN RECOMMENDATIONS

Our industry-specific experts know the right questions to ask, helping customers anticipate unforeseen challenges and embed solutions into smart well-designed structures.

BID PROCESS SPECIFICATION WRITING ASSISTANCE

For larger projects that require a Big Top structure, we help architects and builders by writing our portion of the specification, ensuring accuracy in the bid process.

TURNKEY ON-SITE INSTALLATION

Our experienced on-site installation crews provide a fast, no-hassle approach to installing your Big Top structure.

INSTALLATION SUPPORT

We also can provide oversight and project management for customers who want to handle installation with their own in-house crews.

TECH SUPPORT

We are available to answer any questions you may have about how to fix, add to or amend a structure once it has been installed.

EXPANSION, RELOCATION AND REPAIR SUPPORT

As new conditions, requirements and needs emerge, we provide support and technical expertise to alter or adapt existing structures. We can also provide assistance if you are moving your structure to a new location.



THINGS TO CONSIDER

WHEN BUYING A FABRIC STRUCTURE

QUICK CHECKLIST & BUYING GUIDE

Why do you need a fabric structure?

We custom build your structure specific to your application so begin thinking about who or what will be working within it.

- Do you want to protect fixed machinery, moveable equipment or perhaps large vehicles, marine equipment or aircraft?
- Are you expanding your business and need more workspace?
- Or are you keeping materials out of the weather?

How big does it need to be?

We understand that your assets may need unique clearances for width and height. Starting at 12' and extending to 166' in width, our structures can be built to a limitless length with our largest structure topping out at nearly 73' tall.

- Are there any unique size requirements that we should consider?

Where is it going?

Our structures can be installed on virtually any surface with minimal site preparation but will require anchors specific to your location.

- Will it be on asphalt, concrete, wood pilings or perhaps on a shipping container or on ballast blocks?
- Is your greatest need to protect against heat and sun or possibly cold and snow?
- Will it be near the coast or high winds?

Does it need to be enclosed and conditioned?

With natural light and relative temperature differences of nearly 15 degrees (cooler in the summer and warmer in the winter), our structures provide a surprisingly nice environment for both hot and cold climates even when not conditioned.

- Do you need the structure fully enclosed?
- Do you need it insulated, heated and cooled?

What will enter your new structure and how?

We have a variety of closed and access end panels available and doors of various sizes including glass, aluminum and rollup.

- What will be the easiest way for you and your equipment to enter and exit your structure?

Have you thought about custom options?

Portable flooring, custom air scrubbing systems, electrical and lighting packages are just a few of the many options available to round out an interior environment specific to your business.

- Do you have daily tasks or workflows we should consider when designing your complete structure package?

Do you need help with installation?

We offer a complete end-to-end solution from planning all the way through final installation and can do as much or as little as you require.

- Do you have the capability to install your own structure or want to leave it to us?
- How often will your structure change locations?



WE REALIZE THAT BUYING A FABRIC STRUCTURE ISN'T SOMETHING YOU DO EVERYDAY.

HERE'S HOW WE MAKE IT EASY FOR YOU:



1. LET'S CONNECT

Call **1-800-277-8677** to speak with a Big Top sales expert or head to **www.bigtopshelters.com**. Tell us what you need to protect, where your fabric structure will be and we can take care of the rest.



2. IT'S ALL ABOUT THE DETAILS

Now that we have a pretty good idea of the project at hand, we'll dive deeper into your specific needs such as unique dimensions, fabric, end walls, door options and HVAC systems.



3. FINAL PROPOSAL

We will put all the pieces and parts together, send you samples of our fabric and line item pricing for your project.



4. REVIEW YOUR DESIGNS

Now it's time to see your fabric structure. Review your designs and if we need to work out some details, we'll adjust your designs until you're completely satisfied.



5. DECIDE TO GO BIG TOP

Once you give us the thumbs up we'll begin production on your fabric structure.



6. FABRICATION & SHIPPING

4-6 weeks later your shelter is ready to go and in most cases shipping time on a flatbed trailer is less than 1 week (depending on your location).



7. INSTALLING YOUR BIG TOP

We offer end-to-end service so if you need our help installing the structure we average 2000 square feet per day for the perfect installation on nearly any surface.

SEE THE DIFFERENCE

FABRIC SPECS / CHARACTERISTICS



BIG TOP PROTECTS YOUR MOST VALUABLE ASSETS WITH THE TOUGHEST FABRIC IN THE INDUSTRY.

Waterproof, windproof, treated to protect against UV and mildew and is lead free

Translucent - No artificial lighting needed for daytime use (opaque options available)

Provides a 10-15 degree temperature change (cooler in the summer and retains heat in the winter)

Unique polyester scrim that with a tighter weave that prevents tearing and makes our fabric 30-50% stronger

Flame retardant / Passes NFPA – 701 Large/Small Scale Self Extinguishing Test

Available in 18oz (21 mil), 22oz (22.5 mil) and 28oz (32 mil)

Berry compliant (100% American made)

Radio Frequency or Hot Air Welded for the strongest waterproof seams on the market



INSIDE - *(shown above)*
Ripstop inside to mitigate tearing.

OUTSIDE -
Smooth outside to deflect dirt.

**FEEL THE DIFFERENCE
FOR YOURSELF.**
Contact us for a fabric sample.



IT'S IN THE DETAILS

PRODUCT DETAILS / SPECIFICATIONS / ACCESSORIES



At home and abroad Big Top has protected the US Military's most valuable assets for decades. And as a nod to their confidence in Big Top's products and attention to detail the USAF chose Big Top to cover their newest squadron of one of the world's most advanced aircraft, the F-35.





Smarter, faster, more reliable and increasingly more mobile. These are the demands of the modern business world and our structures are built to meet them.

For over three decades we have worked closely with manufacturers to perfect discreet product specifications, and in that time, we've mastered the details. More important than any single technical component, we use a flexible system comprised of our proprietary tensioned fabric and steel framework to build world-class structures that perform in any application, climate or geographic location. This system enables us to custom-fit our structures to your exact specifications, allowing you to produce, protect and grow.

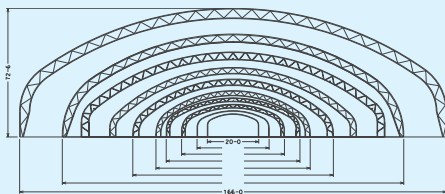
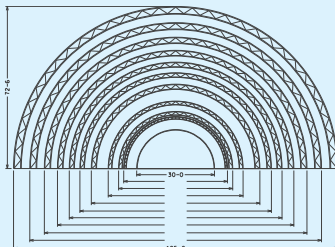
WE CAN CUSTOMIZE ACCESSORIES AND ADD-ONS TO FIT YOUR UNIQUE NEEDS - THE POSSIBILITIES ARE ENDLESS.

PROPRIETARY TENSIONED FABRIC AND STEEL SYSTEM

We use only the best available fabric to produce our durable and flexible structures. Our tensioning system works in conjunction with a unique galvanized steel framework. Long lasting, maintenance free and rust resistant, all BigTop frames are created as modular pieces by experienced in-house craftsmen to allow for quick assembly on location.

SIZES

One of the primary benefits of a BigTop fabric structure is the ability to tailor our structures to meet the height and width requirements of nearly any application.



WARRANTY

Providing long-lasting high-quality products means offering our customers a variety of different warranties that extend the life of our products. Our different warranties cover the fabric in our original structures, and in our used inventory, as well as the steel frames we use in our structures.

DOORS

Access points can make a big difference in a structure's ease of use, as well as maintaining energy efficient environments. Whether its glass, aluminum, or fabric, our door options provide customers with added insulation and enable large-scale entry.

Options include:

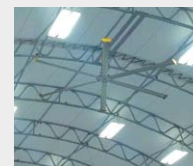
- Disappearing Vinyl (manual or electric)
- Metal Door (chain hoist or electric)
- Personnel (single and double in either aluminum or steel with optional panic hardware)
- Large Scale Hydraulic Powered Doors
- Clear Vinyl Freezer Flaps (can be used for refrigeration or equipment)
- Accordion fold vinyl flap with various winch options
 - Manual and Electric
 - Thern 472
 - DLB 1200
 - Superwinch 1500
 - Thern 4HPF2M
 - Thern 4WP2D8



HVAC

Proper heating, air conditioning and ventilation are critical to both a shelter's contents and the safety of its workers. Big Top offers numerous conditioning choices including:

- Air remediation solutions
- Air scrubbing systems
- Vent options: louvered vents, exhaust and intake fans
- Dehumidification equipment
- Big Ass Fans
- 10 ton Carrier (air conditioner only or with 24kw electric heat)
- Wall mounted AC units
- Flex Duct
- Duct socks
- Radiant Tube - Gas & Electric
- Radiant - Electric
- Forced Air – Gas & Electric



ELECTRICAL

Big Top structures are designed to provide natural light flow during the day. We work with customers to determine your additional lighting needs and provide you with design, manufacturing and delivery of all components, which include, among others, metal-halide lights, fluorescent lights, and flood lights.



LIGHTING

BigTop structures are designed to provide natural light flow, but many customers have a need for additional lighting so we offer:

- 400 W Metal Halide
- LED lighting
- Fluorescent lighting
- Flood Lights
- Obstruction lighting
- Wall pack
- Exit
- Exit with battery Back
- Incandescent
- Exterior Lighting

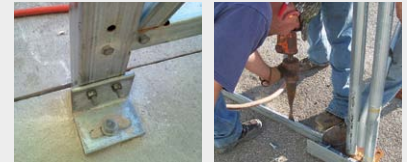


ANCHORING

Whether it's dirt, asphalt, concrete, wood or even an ISO shipping container, our experts work closely with you to determine which anchoring method or mobility solution best fits your needs.

Options include:

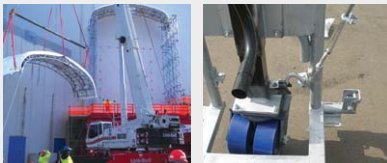
- 40" spiral anchor
- Concrete anchor



MOBILITY

For many customers, a mobile structure gives them the ability to choose different sites, lessen environmental impact and cut costs on future projects. Our new structures can be built to be crane lift-able, and we also offer a retro fit kit for structures 2012 and newer. Wheeled mobility options also available:

- 100 & 70 lb crane rail
- Manual and pneumatic jacks
- V-grooved wheels – (roll on inverted angle)
- Casters – (mounted to directly to structure)



LIGHTNING PROTECTION

We offer various of levels of protection to help meet your budget including:

- Preventor 2005A
- UL Rated Air Terminal System (Big Top exclusive system)
- Standard Air Terminal System (Big Top exclusive system)
- Grounding Kit



FLOORING

If you are not installing on a concrete slab or other fixed system we have options including:

- Hexadeck
- Event Deck
- Turf/carpet
- Sports flooring



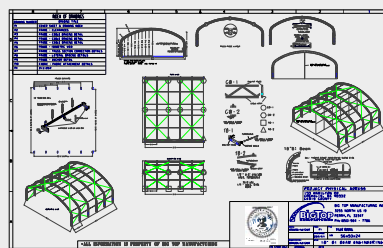
INSULATION

- Astro Foil
- Insulation Liners
- Batt Insulation - R30



ENGINEERING

Wind and Snow loading are important factors when it comes to your fabric structure. If required, Big Top can provide engineered stamped drawings for all 50 States and Internationally (IBC).



GUTTERS & TRIM KITS

- Fabric gutters for adjoining structures
- Aluminum terminations bars that prevents flapping in excessively windy areas and for a more finished look. Also prevents groundwater intrusion.





APPLICATIONS

AGRICULTURE | AVIATION | COMMERCIAL + INDUSTRIAL | ENVIRONMENTAL
GOVERNMENT | MARINE | MILITARY | MINING + MINERAL | OIL + GAS
SCHOOLS + GYMNASIUMS | SPORTS + EVENTS



AGRICULTURE

For over 30 years, Big Top has enabled clients to protect valuable assets, provide comfortable production environments and procure the resources needed to grow and prosper. Our custom-built fabric structures are designed to withstand the harshest conditions, while ensuring that your business needs are met, from covering costly equipment to protecting livestock and feed.

WHAT A BIG TOP PROTECTS

FARMING EQUIPMENT

Increase the lifespan of your most expensive equipment by keeping it out of the elements and under a Big Top fabric structure. Tractors, combines and other large machinery can be kept safe and covered when not in use and also provide you and your workers with an ideal environment for maintenance.

LIVESTOCK

Maintaining the health and well-being of your livestock is key to a working farmer's success. Big Top fabric structures will give you an ideal environment to raise your livestock, shielding them from harsh weather and protecting them from outside predators. Because each one of our structures can be completely customized and is environmentally controlled, you can use them as stables or secure, comfortable coops. Whatever your specific needs are, Big Top has a structure to exceed them.

FEED STORAGE

Our structures are both mobile and easily erected and dismantled as your grain and feed storage needs fluctuate through the year. With temperature and humidity controls, feed is kept dry and protected from vermin and other pests.



CUSTOMER SPOTLIGHT

Tia Jones -
Herd of Two, Parker, CO

High winds, heavy snow and extreme heat present a challenging environment for an outdoor professional in Parker Colorado. Tia Jones, a horse trainer and riding instructor wanted to expand her passion into a full time business working through the cold, snow covered winters and blistering hot summers. She needed a structure that she could trust with high snow and wind load ratings, one that would keep her warm and protected in the winter, yet cool in the summer.

After years of research and many questions Tia chose Big Top referencing the countless military and public installations as Big Top's best referrals. She trusts the 72' x 140' structure's integrity implicitly. Prior to the structure she had to cancel appointment after appointment and couldn't operate during most of the winter. Now she can train in any weather, any time of year and her business has never been better.

"We get extreme winds, heat, cold and big snowfalls so having a structure was a requirement for my success and having one I could trust was imperative. I love the brightness of my Big Top and how it's warmer in the winter and cooler in the summer. It has been hugely important for my business growth."



AGRICULTURE

Protect. Produce. Grow.

HOW A BIG TOP BENEFITS YOU

EXTREMELY DURABLE

Our proprietary tensioned fabric and steel framework enables Big Top structures to withstand high winds, heavy snow loads and whatever else Mother Nature throws at them. They have been rigorously tested across the globe in every climate imaginable and are recognized as the most durable fabric structures available on the market. We'll assist you in designing a structure that holds up to your application.

QUICK TO INSTALL

You need a new building and you probably need it now. A Big Top is a much quicker option than building a permanent structure and usually can be constructed in 4 or 5 days. This means you can keep your people working and, in doing so, avoid costly downtime and inefficiencies.

COMPLETELY PORTABLE

Big Top structures are completely mobile and can be easily relocated by rail, wheels or as a whole unit by crane. And if the day ever comes when you no longer need it, you can break it down just as easily as it went up and store it indefinitely. The steel frame is galvanized to keep it free from rust or corrosion no matter how long it's stored, and the fabric cover can be rolled or folded into a fraction of its outstretched size.

CLIMATE CONTROLLED AND VENTILATED

Rest assured that the environment inside a Big Top is ideal for your application. In most climates, Big Top structures maintain a comfortable, even temperature that varies between +/- 15 degrees of outside conditions. We'll help you accessorize your fabric structure with the exact ventilation, heating, cooling, lighting and electrical systems that will be suitable for your products, assets and employees.

HIGHLY CUSTOMIZABLE

Whether it's storing sensitive materials or accommodating thousands of people, we will work with you to design a solution that meets your needs. There's practically nothing we can't customize to your specifications, from doors and entryways, to HVAC, electrical, lighting, and eco-friendly options.

MORE COST-EFFICIENT

With a Big Top, you'll get more out of it than you'll ever put into it. For starters, fabric structures are much more affordable than traditional structures, up to 70%. But they'll also save you money in other ways. You can classify them as equipment, so you won't have to pay property taxes. You'll save on upkeep because they're maintenance-free. And, you can install the structure on practically any foundation, saving you time and money.





AVIATION

For over 30 years, Big Top has enabled clients to protect valuable assets, provide comfortable production environments and procure the resources needed to grow and prosper. Our custom-built fabric structures are designed to withstand the harshest conditions, while ensuring that your business needs are met, from covering the world's most elite military fighters to your general aviation aircraft.

WHAT A BIG TOP PROTECTS

HANGARS

Our structures cover the U.S. Military's most valuable aircraft including the F22 Raptor and F35 Lightning at continental and international bases in the harshest climates such as Marine Corps Air Station Yuma in Arizona and Eglin Air Force Base on the coast of Florida. The same technology is also used for our General Aviation canopies and hangars at regional airports across the country. You can rest assured that your aircraft is protected with the highest quality product and that your avionics package and airframe can now be out of the sun and harsh weather.

HANGARS WE OFFER

- Shade
- Commercial
- Military
- Helicopter

PORTABLE TERMINALS

As crucial as it is to protect an aircraft, it's also important to shelter the people going to and from it as well as the equipment around it. In these instances, there's no better solution than a Big Top terminal enclosure. Whether you need it at a smaller airport that doesn't have its own terminals or a larger airport where the hangars are far from the main terminal, a mobile fabric structure such as a terminal enclosure can be a welcome addition to any site used for airplanes, helicopters and aviation equipment.



CUSTOMER SPOTLIGHT

**Karen Showalter - President,
Showalter Flying Service, Orlando, FL**

Showalter Aviation is Florida's oldest and largest family-owned FBO. In 2004 Hurricane Charlie destroyed \$2 million's worth of their hangars. The structures had been long since paid for and were leased to customers at an incredibly affordable rate, resulting in a solid revenue center for the FBO. Replacing the hangars as fixed, conventional structures would be expensive and cause a substantial rate increase to customers.

They turned to Big Top and for a fraction of the cost, installed 17 new structures accommodating 35 aircraft. Ten years later the structures are still keeping airframes out of the rain, hail and sun, minimizing internal cabin heat thus protecting costly avionics, and at a rate that keeps their owners and Showalter quite happy.

"After Hurricane Charlie destroyed our traditional hangars in 2004, we needed new structures that performed but at a price that our customers could afford. And that was Big Top."



AVIATION

Protect. Produce. Grow.

HOW A BIG TOP BENEFITS YOU

EXTREMELY DURABLE

Used by the U.S. Military for decades, our proprietary tensioned fabric and steel framework enables Big Top structures to withstand high winds, heavy snow loads and whatever Mother Nature throws at them. They have been rigorously tested across the globe in every climate imaginable and are recognized as the most durable fabric structures available on the market. We'll assist you in designing a structure that holds up to your application.

QUICK TO INSTALL

You need a new building and you probably need it now. A Big Top is a much quicker option than building a permanent structure and usually can be constructed in 4 or 5 days. This means you can keep your people working and, in doing so, avoid costly downtime and inefficiencies.

COMPLETELY PORTABLE

Big Top structures are completely mobile and can be easily relocated by rail, wheels or as a whole unit by crane. And if the day ever comes when you no longer need it, you can break it down just as easily as it went up and store it indefinitely. The steel frame is galvanized to keep it free from rust or corrosion no matter how long it's stored, and the fabric cover can be rolled or folded into a fraction of its outstretched size.

CLIMATE CONTROLLED AND VENTILATED

Rest assured that the environment inside a Big Top is ideal for your application. In most climates, Big Top structures maintain a comfortable, even temperature that varies between +/- 15 degrees of outside conditions. We'll help you accessorize your fabric structure with the exact ventilation, heating, cooling, lighting and electrical systems that will be suitable for your products, assets and employees.

HIGHLY CUSTOMIZABLE

Whether it's storing sensitive materials or accommodating thousands of people, we will work with you to design a solution that meets your needs. There's practically nothing we can't customize to your specifications, from doors and entryways, to HVAC, electrical, lighting, and eco-friendly options.

MORE COST-EFFICIENT

With a Big Top, you'll get more out of it than you'll ever put into it. For starters, fabric structures are much more affordable than traditional structures, up to 70%. But they'll also save you money in other ways. You can classify them as equipment, so you won't have to pay property taxes. You'll save on upkeep because they're maintenance-free. And, you can install the structure on practically any foundation, saving you time and money.





COMMERCIAL/ INDUSTRIAL

For over 30 years, Big Top has enabled clients to protect valuable assets, provide comfortable production environments and procure the resources needed to grow and prosper. Our custom-built fabric structures are designed to withstand the harshest conditions, while ensuring that your business needs are met, from warehousing, to high capacity work environments.

WHAT A BIG TOP PROTECTS

WAREHOUSING

Big Top structures are a versatile, cost effective solution for your growing warehousing needs. A Big Top structure can be customized to fit your application - climate control, lighting, electrical packages and many other options.

BULK STORAGE

Bulk storage, just by nature, requires a vast amount of space. Big Top structures utilize a proprietary tensioned fabric and steel framework, eliminating the need for bulky beams and columns that reduce storage space.

CONSTRUCTION

In the construction business, there is always a need for added shelter, protective work spaces and modular structures that can be relocated as workflow progresses throughout a site. Perfect for both new and existing sites, our structures are designed to adapt to whatever your project entails, protecting sensitive materials, expensive equipment and the people working within them.

LUNCHROOMS

Big Top structures offer a cost effective, and rapidly deployable solution for lunch rooms and gathering areas for your staff and contractors. When the whistle blows, you can be assured that your team has a safe, comfortable place to congregate. Our structures have been used as mess halls and break areas by the U.S. military and private organizations for years.

OFFICES

When you need additional office space, you need an environment that's conducive to working, at a price that won't put you out of business. Guaranteed to cost less than a permanent structure, a Big Top structure is the perfect answer and 100% customizable to address all work comforts.

PAINT APPLICATIONS

When applying paint, you need a safe, clean environment to do the job. Big Top structures have a wide range of ventilation and HVAC options to keep your workers safe and the work environment comfortable. No matter how big the job, a Big Top structure can accommodate your projects without an issue.



CUSTOMER SPOTLIGHT

**Terry White - Owner & President,
B.E.T.-ER Mix Inc., Hudson, FL**

Dry material is a critical component of concrete recycling and production. On the damp coast of Florida this can be a challenging endeavor. Installing permanent steel structures would require a lengthy permitting process and can't be relocated as needs change. With installation of eleven Big Top structures, at a fraction of the cost of traditional structures, B.E.T.-ER Mix Concrete is now able to protect their expensive equipment and valuable material.

B.E.T.-ER Mix can crush rock and produce material in the worst of weather year-round. Large loaders and dump trucks are able to move in and out of the massive clear span structures day or night. As business needs change, the structures can be moved around their facility, maintaining efficiency.

"We have nearly \$5 million worth of equipment and use Big Top to cover everything. It's worked out very well for us so we can crush rock year-round now which we couldn't do before."



COMMERCIAL/ INDUSTRIAL

Protect. Produce. Grow.

HOW A BIG TOP BENEFITS YOU

EXTREMELY DURABLE

Our proprietary tensioned fabric and steel framework enables Big Top structures to withstand high winds, heavy snow loads and whatever else Mother Nature throws at them. Our structures have been rigorously tested across the globe and are recognized as the most durable fabric structures available on the market.

QUICK TO INSTALL

You need a new building and you probably need it now. A Big Top structure is a much quicker option than building a permanent structure and usually can be installed in 4 or 5 days. This means you can keep your people working and, in doing so, avoid costly downtime and inefficiencies.

COMPLETELY PORTABLE

Big Top structures are completely mobile and can be easily relocated by rail, wheels or as a whole unit by crane. And if the day ever comes when you no longer need it, you can break it down just as easily as it went up and store it indefinitely. The steel frame is galvanized to keep it free from rust or corrosion no matter how long it's stored, and the fabric cover can be rolled or folded into a fraction of its outstretched size.

CLIMATE CONTROLLED AND VENTILATED

You can rest assured that the environment inside of a Big Top is ideal for your application. In most climates, Big Top structures maintain a comfortable, even temperature that varies between +/- 15 degrees of outside conditions (cooler in the summer and warmer in the winter). We'll help you accessorize your fabric structure with the exact ventilation, heating, cooling and electrical systems that will be suitable for your products, assets and employees.

HIGHLY CUSTOMIZABLE

Whether it's a protective structure to store costly materials or a high-capacity building to accommodate thousands of people, we will work with you to design a solution that meets your needs. There's practically nothing we can't customize to your specifications, from doors and entryways, to HVAC, electrical, lighting, and eco-friendly options.

MORE COST-EFFICIENT

When you buy a Big Top structure, you'll get more out of it than you'll ever put into it. For starters, fabric structures are much more affordable than traditional structures. But they'll also save you money in other ways. You can classify them as equipment, not as permanent structures, often avoiding hefty property taxes and permitting fees. And since they are virtually maintenance-free you won't have to spend money on their upkeep. Installation can be completed on nearly any foundation saving you time and money.





ENVIRONMENTAL

For over 30 years, Big Top has enabled clients to protect valuable assets, provide comfortable production environments and procure the resources needed to grow and prosper. Our custom-built fabric structures are designed to withstand the harshest conditions, while ensuring that your business needs are met, from containing potentially hazardous material to storing recyclable and compostable waste.

WHAT A BIG TOP PROTECTS

WASTE MANAGEMENT

With uncertainty about future waste volume production, the expense and lack of flexibility of permanent structures, more and more waste management companies are turning to Big Top as a turn key solution to their processing facilities. Each one is designed with your budget in mind and can be fully customized to meet your specific needs.

DECONTAMINATION

The safety of your workers is paramount when dealing with hazardous chemicals and radioactive materials. From basic decontamination procedures like showering and changing clothes in rooms separated by walls or dividers, to more advanced processes like chemical cleansing, UV radiation and ionization, a Big Top fabric structure will provide your workers with unparalleled protection. You can also utilize your structure to fully decontaminate and disinfect your vehicles and equipment that have been exposed to these harmful elements.

POLLUTION CONTAINMENT

When dealing with pollutants and other environmentally dangerous substances, you need a stable, secure location to store them while they are waiting to be transported to a permanent disposal site. A Big Top fabric structure is a safe, affordable option that meets the government's rigorous standards. It will provide you with the protection you need to keep pollutants away from the environment and your workers.

REMEDATION ENCLOSURES

A Big Top fabric structure will serve as a comfortable, reliable base to store equipment, gather personnel and run all necessary phases of your remediation project. Working within an enclosed structure will allow the work to continue uninterrupted, regardless of the weather conditions.



CUSTOMER SPOTLIGHT

Synagro Technologies Inc., Charlotte County, Florida

With rows of biosolid waste covering acres and acres of paved land, open air composting, a common process, is a bit more challenging in the rainy summer months of southwest Florida. The aerobic process halts when the material gets wet, thus causing an unforeseen delay.

Synagro's Charlotte County Bio-Recycling Center's solution was to cover the process with two massive 162' x 280' Big Top structures towering at 64' tall. Now, the rows of compost can be turned five times a day and reach the required 131°F temperature to turn the material into a sellable, all-purpose Class AA composting producing within a short 15 days. The solid waste was typically mixed with wood waste and could be only used as a top layer in the landfill is now diverted and 100% recyclable. This all-weather solution allows Charlotte County to cost-effectively produce 100,000 cubic yards of compost regardless of the season.



ENVIRONMENTAL

Protect. Produce. Grow.

HOW A BIG TOP BENEFITS YOU

EXTREMELY DURABLE

Our proprietary tensioned fabric and steel framework enables Big Top structures to withstand high winds, heavy snow loads and whatever else Mother Nature throws at them. They have been rigorously tested across the globe in every climate imaginable and are recognized as the most durable fabric structures available on the market. We'll assist you in designing a structure that holds up to your application.

QUICK TO INSTALL

You need a new building and you probably need it now. A Big Top is a much quicker option than building a permanent structure and usually can be constructed in 4 or 5 days. This means you can keep your people working and, in doing so, avoid costly downtime and inefficiencies.

COMPLETELY PORTABLE

Big Top structures are completely mobile and can be easily relocated by rail, wheels or as a whole unit by crane. And if the day ever comes when you no longer need it, you can break it down just as easily as it went up and store it indefinitely. The steel frame is galvanized to keep it free from rust or corrosion no matter how long it's stored, and the fabric cover can be rolled or folded into a fraction of its outstretched size.

CLIMATE CONTROLLED AND VENTILATED

Rest assured that the environment inside a Big Top is ideal for your application. In most climates, Big Top structures maintain a comfortable, even temperature that varies between +/- 15 degrees of outside conditions. We'll help you accessorize your fabric structure with the exact ventilation, heating, cooling, lighting and electrical systems that will be suitable for your products, assets and employees.

HIGHLY CUSTOMIZABLE

Whether it's storing sensitive materials or accommodating thousands of people, we will work with you to design a solution that meets your needs. There's practically nothing we can't customize to your specifications, from doors and entryways, to HVAC, electrical, lighting, and eco-friendly options.

MORE COST-EFFICIENT

With a Big Top, you'll get more out of it than you'll ever put into it. For starters, fabric structures are much more affordable than traditional structures, up to 70%. But they'll also save you money in other ways. You can classify them as equipment, so you won't have to pay property taxes. You'll save on upkeep because they're maintenance-free. And, you can install the structure on practically any foundation, saving you time and money.





GOVERNMENT

For over 30 years, Big Top has enabled clients to protect valuable assets, provide comfortable production environments and procure the resources needed to grow and prosper. Our custom-built fabric structures are designed to withstand the harshest conditions, while ensuring that your needs are met. We have decades of experience across a variety of government agencies, understand the ins and outs of specific requirements and can help provide you with the best possible solution within your department's budget.

WHAT A BIG TOP PROTECTS

EQUIPMENT STORAGE

Big Top fabric storage structures provide your equipment with shelter from the heat, cold, wind and rain so that they are not susceptible to corrosion-inducing elements that reduce their lifespan. These structures are large enough to accommodate vehicles and heavy construction equipment, such as dump trucks, bulldozers and backhoes.

VEHICLE INSPECTIONS

Having a covered facility to inspect vehicles will shield your inspectors from adverse weather and extreme heat, enabling them to work in relative comfort and more rapidly.

WASTE RECYCLING

Big Top recycling shelters help you diminish the impact of recycling operations on the immediate environment and surrounding communities. The engineered fabric allows daylight to enter, which reduces the need for electrical lighting, but it also blocks harmful UV rays and its wide open space allows you to easily move waste and recycling into and out of the structure.

EMS STATION

When you're deployed to a disaster area, you need a structure that can be installed rapidly and moved easily. Whether you need a large, multi-room complex with areas for admission, triage, first aid and surgery, a structure that includes negative-pressure systems for sterile areas and the containment of pathogens and toxins, Big Top can customize the idea one for you.

WASH-DOWN STRUCTURES

As a testament to the versatility of tensioned fabric shelters from Big Top, a newer model is available that has been engineered as a wash-down structure. It began with a custom request from the United States Marine Corps, and it worked so well that we now produce a standard design that can be installed in less than a day and incorporates wash racks not unlike those used in car washes.

POST OFFICES

Bulk mail storage is a costly venture and warehouses large enough to store it are often very expensive to construct and maintain, but tensioned fabric shelters from Big Top can meet your warehousing needs for a fraction of the cost.



CUSTOMER SPOTLIGHT

United States Border Patrol, El Paso, TX

Stretching 2,000 miles from California to Texas, the border between the US and Mexico is plagued with scorching sun and extreme heat. Border control historically has focused on preventing illegal immigrants and drugs from crossing into the US. With the rise of cartels, gun and money trafficking out of the US is now a problem. Establishing new outbound checkpoints in the open under the blistering sun and within sight of prying eyes on the other side of the border was not an option.

The US Border Patrol needed a flexible solution to protect their inspectors at 17 checkpoints along the border, each with very unique and specific dimensions. They turned to Big Top. Installations were completed at night and in remote locations. In a coordinated effort with Border Patrol, Big Top was able to complete all 17 structures within a year and a half, and now keep the officers out of the sun and the inspections out of sight.



GOVERNMENT

Protect. Produce. Grow.

HOW A BIG TOP BENEFITS YOU

EXTREMELY DURABLE

Used by the U.S. Military for decades, our proprietary tensioned fabric and steel framework enables Big Top structures to withstand high winds, heavy snow loads and whatever else Mother Nature throws at them. They have been rigorously tested across the globe in every climate imaginable and are recognized as the most durable fabric structures available on the market. We'll assist you in designing a structure that holds up to your application.

QUICK TO INSTALL

You need a new building and you probably need it now. A Big Top is a much quicker option than building a permanent structure and usually can be constructed in 4 or 5 days. This means you can keep your people working and, in doing so, avoid costly downtime and inefficiencies.

COMPLETELY PORTABLE

Big Top structures are completely mobile and can be easily relocated by rail, wheels or as a whole unit by crane. And if the day ever comes when you no longer need it, you can break it down just as easily as it went up and store it indefinitely. The steel frame is galvanized to keep it free from rust or corrosion no matter how long it's stored, and the fabric cover can be rolled or folded into a fraction of its outstretched size.

CLIMATE CONTROLLED AND VENTILATED

Rest assured that the environment inside a Big Top is ideal for your application. In most climates, Big Top structures maintain a comfortable, even temperature that varies between +/- 15 degrees of outside conditions. We'll help you accessorize your fabric structure with the exact ventilation, heating, cooling, lighting and electrical systems that will be suitable for your products, assets and employees.

HIGHLY CUSTOMIZABLE

Whether it's storing sensitive materials or accommodating thousands of people, we will work with you to design a solution that meets your needs. There's practically nothing we can't customize to your specifications, from doors and entryways, to HVAC, electrical, lighting, and eco-friendly options.

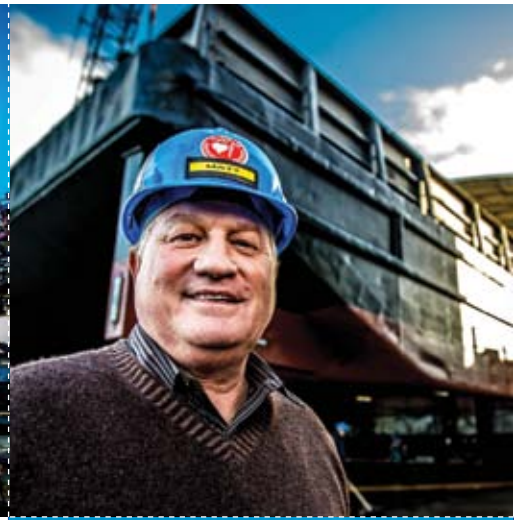
MORE COST-EFFICIENT

With a Big Top, you'll get more out of it than you'll ever put into it. For starters, fabric structures are much more affordable than traditional structures, up to 70%. But they'll also save you money in other ways. You can classify them as equipment, so you won't have to pay property taxes. You'll save on upkeep because they're maintenance-free. And, you can install the structure on practically any foundation, saving you time and money.





MARINE



CUSTOMER SPOTLIGHT

Matt Nichols - CEO, Nichols Bros. Boat Builders, Whidbey Is, WA

Nichols Bros. builds and refurbishes ships and barges from around the world. They refit, sandblast and paint vessels hundreds of feet long. Traditionally shipbuilders have used run of the mill tarps on a large scale to cover vessels throughout the process. It is time consuming to re-tie the tarps, the space is tight, and it's tough to move around with welding torches and sandblasting equipment.

Accommodating in width and height, eleven Big Top structures now provide shelter for ongoing projects. The structures can be easily moved from one job to the next or down the length of their larger vessels as they complete work section by section. Sandblasting and overspray are contained and work can continue through the harsh winter months.

"As we add Big Top structures we continue to save labor hours on every project, Of course that means our bottom line improves, profits go up and that makes everybody happy."



For over 30 years, Big Top has enabled clients to protect valuable assets, provide comfortable production environments and procure the resources needed to grow and prosper. Our custom-built fabric structures are designed to withstand the harshest conditions, while ensuring that your business needs are met, from covering large land-based refit projects to enclosing valuable cargo.

WHAT A BIG TOP PROTECTS

MARINE REFIT

Refitting a barge or ship can be cumbersome without a covered structure to protect from the rain, wind, snow, heat and cold. Containing overspray and sandblasting will also allow work and productivity to continue without interruption. The modular nature of a Big Top allows the buildings to be quickly moved or rearranged to meet all of your refitting needs.

DRY DOCKS AND GRAVING DOCKS

Often left open to accommodate vessels of varying heights, dry docks can actually be covered easily with a fabric structure and Big Top offers an unlimited range of dry dock and graving dock covers at nearly any height, all constructed to withstand the harshest elements.

SHIPYARD AND PORT SUPPORT

Big Top mobile marine support structures are diverse and convenient solutions to many challenges to marine building requirements including:

- Warehouses • Vehicle / Heavy Equipment Storage • Covered Docks • Repair Centers

CARGO ENCLOSURES

If your cargo is in transit or it's still sitting at a port waiting for transportation a Big Top fabric structure is the perfect way to shield it during all stages of the process. They're custom-designed and can be bolted directly on top of a ventilated container, directly to your shipyard grounds or even to the deck of a boat.

BOAT STORAGE

Protecting your boat when not in use preserves longevity but doing so can be a very expensive proposition. A Big Top fabric structure is a much less expensive, but equally as effective alternative to building a traditional dock building and long term, can be cheaper than renting covered storage during the off season.

BARGE AND SHIP CONTAINERS

Intermodal containers are often used as convenient storage facilities, as well as workspaces. Low ceilings and a lack of open space often present a problem easily solved by installing a Big Top over the space between two containers with the containers serving as the walls of the structure while the arched cover serves as the roof.



MARINE

Protect. Produce. Grow.

HOW A BIG TOP BENEFITS YOU

EXTREMELY DURABLE

Used by the U.S. Military for decades, our proprietary tensioned fabric and steel framework enables Big Top structures to withstand high winds, heavy snow loads and whatever else Mother Nature throws at them. They have been rigorously tested across the globe in every climate imaginable and are recognized as the most durable fabric structures available on the market. We'll assist you in designing a structure that holds up to your application.

QUICK TO INSTALL

You need a new building and you probably need it now. A Big Top is a much quicker option than building a permanent structure and usually can be constructed in 4 or 5 days. This means you can keep your people working and, in doing so, avoid costly downtime and inefficiencies.

COMPLETELY PORTABLE

Big Top structures are completely mobile and can be easily relocated by rail, wheels or as a whole unit by crane. And if the day ever comes when you no longer need it, you can break it down just as easily as it went up and store it indefinitely. The steel frame is galvanized to keep it free from rust or corrosion no matter how long it's stored, and the fabric cover can be rolled or folded into a fraction of its outstretched size.

CLIMATE CONTROLLED AND VENTILATED

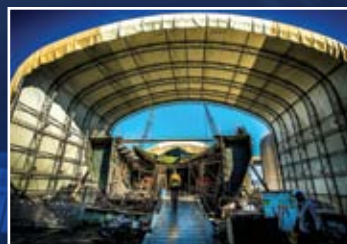
Rest assured that the environment inside a Big Top is ideal for your application. In most climates, Big Top structures maintain a comfortable, even temperature that varies between +/- 15 degrees of outside conditions. We'll help you accessorize your fabric structure with the exact ventilation, heating, cooling, lighting and electrical systems that will be suitable for your products, assets and employees.

HIGHLY CUSTOMIZABLE

Whether it's storing sensitive materials or accommodating thousands of people, we will work with you to design a solution that meets your needs. There's practically nothing we can't customize to your specifications, from doors and entryways, to HVAC, electrical, lighting, and eco-friendly options.

MORE COST-EFFICIENT

With a Big Top, you'll get more out of it than you'll ever put into it. For starters, fabric structures are much more affordable than traditional structures, up to 70%. But they'll also save you money in other ways. You can classify them as equipment, so you won't have to pay property taxes. You'll save on upkeep because they're maintenance-free. And, you can install the structure on practically any foundation, saving you time and money.





MILITARY



CUSTOMER SPOTLIGHT

United States Air Force - Eglin Air Force Base, FL

Decades ago AV-8B Harriers dotted the flight line at Marine Corps Air Station Yuma. In the blazing hot Arizona sun, window canopy temperatures reached a staggering 198°F and pilots entering the aircraft would be greeted by seat temperatures at a startling 168°F. For both pilot safety and performance, it was clear that the aircraft needed to be covered. And this is where the Big Top relationship with the US military began.

Now, under Big Top fabric structures, window canopies are 125°F and the seats are a manageable 98°F. The program was such a success the story spread. Big Top structures can now be found covering aircraft at China Lake NB, Edwards AFB, Moody AFB, and Eglin AFB, to name a few. And, as a nod to their confidence in the structures, the USAF chose Big Top to cover the 33rd Fighter Squadron's elite F-35's, adding a full year to their paint cycle.



For over 30 years, Big Top has enabled the U.S. Military to protect its most valuable assets, provide comfortable environments for soldiers and support quick deployment to distant locations. Our custom-built fabric structures are designed to withstand the harshest conditions, while ensuring that your critical needs are met, from covering the world's most advanced aircraft and UAV's to providing critical ground support storage and shelter systems.

WHAT A BIG TOP PROTECTS

SOFT WALL EXPEDITIONARY SHELTERS (SWES)

A Big Top RDS can be erected quickly without any heavy equipment or specialized construction training and combines the best elements of hard-walled buildings with soft-walled structures. Sturdy and lightweight, a Big Top structure is both durable and mobile allowing you to rapidly deploy a structure to protect military personnel, vehicles and equipment on missions lasting several days or several months.

FLIGHTLINE SUN PROTECTION SHELTERS (FSPS)

Military and paramilitary forces have been relying on our structures for decades because they are cost-controlled, quickly erected and easily relocated. Even the harshest climates and most treacherous weather conditions, you can rely on the strength and durability of Big Top structures to keep your multi-million dollar assets completely protected.

CONTROLLED HUMIDITY PROTECTION SHELTERS (CHPS)

In some instances, you need a structure that could be used for additional purposes extending beyond the protection of military aircraft. These Big Top structures are ideal for storage, barracks, mess halls and maintenance centers

They're versatile, lightweight and mobile design is ideal for the military and will provide your assets and personnel with strong protection from the harshest elements.

MAINTENANCE SHELTERS

Because adverse weather is the leading cause of long delays when it comes to equipment maintenance and repair, you need a protected structure that keeps the elements out. A Big Top fabric structure eliminates all threats of weather, while providing an ideal working environment for military personnel. Firm believers in their strength and durability, the U.S. military has contracts with Big Top for large area maintenance shelters (LAMS) that can be transported and quickly deployed wherever they are needed.

MULTIPURPOSE SHELTER SYSTEMS

Should you need a structure for multiple uses, Big Top's multipurpose fabric buildings can be converted quickly and easily to serve one purpose after another. Usually no structural changes have to be made, but when modifications are necessary, the modular design makes conversion a simple process. Below are some of the needs that our multipurpose shelter systems fill:

- Storage and Warehousing
- Additional Offices and Workspace
- Military Vehicle and Aircraft Maintenance
- Aircraft Hangars



MILITARY

Protect. Produce. Grow.

HOW A BIG TOP BENEFITS YOU

EXTREMELY DURABLE

Our structures cover the U.S. Military's most valuable aircraft including the F22 Raptor and F35 Lightning at continental and international bases in the harshest climates such as Marine Corps Air Station Yuma in Arizona and Eglin Air Force Base on the coast of Florida. Our proprietary tensioned fabric and steel framework enables Big Top structures to withstand high winds, heavy snow loads and whatever else Mother Nature throws at them. They have been rigorously tested across the globe in every climate imaginable and are recognized as the most durable fabric structures available on the market. We'll assist you in designing a structure that holds up to your application.

QUICK TO INSTALL

You need a new building and you probably need it now. A Big Top is a much quicker option than building a permanent structure and usually can be constructed in 4 or 5 days. This means you can keep your people working and, in doing so, avoid costly downtime and inefficiencies.

COMPLETELY PORTABLE

Big Top structures are completely mobile and can be easily relocated by rail, wheels or as a whole unit by crane. And if the day ever comes when you no longer need it, you can break it down just as easily as it went up and store it indefinitely. The steel frame is galvanized to keep it free from rust or corrosion no matter how long it's stored, and the fabric cover can be rolled or folded into a fraction of its outstretched size.

CLIMATE CONTROLLED AND VENTILATED

Rest assured that the environment inside a Big Top is ideal for your application. In most climates, Big Top structures maintain a comfortable, even temperature that varies between +/- 15 degrees of outside conditions. We'll help you accessorize your fabric structure with the exact ventilation, heating, cooling, lighting and electrical systems that will be suitable for your products, assets and employees.

HIGHLY CUSTOMIZABLE

Whether it's storing sensitive materials or accommodating thousands of people, we will work with you to design a solution that meets your needs. There's practically nothing we can't customize to your specifications, from doors and entryways, to HVAC, electrical, lighting, and eco-friendly options.

MORE COST-EFFICIENT

With a Big Top, you'll get more out of it than you'll ever put into it. For starters, fabric structures are much more affordable than traditional structures, up to 70%. But they'll also save you money in other ways. You can classify them as equipment, so you won't have to pay property taxes. You'll save on upkeep because they're maintenance-free. And, you can install the structure on practically any foundation, saving you time and money.





MINING & MINERAL

For over 30 years, Big Top has enabled clients to protect valuable assets, provide comfortable production environments and procure the resources needed to grow and prosper. Our custom-built fabric structures are designed to withstand the harshest conditions, while ensuring that your business needs are met, from shielding personnel on a remote site to protected equipment storage.

WHAT A BIG TOP PROTECTS

EXPLORATION

A Big Top portable, fabric building can be easily deployed to remote locations and used as staging facilities, maintenance shops and drilling shelters.

MINERAL PROCESSING

Big Top's covered, fabric structures protect surge piles, bulk storage, sorting operations and transfer centers from inclement weather.

FIELD OPERATIONS PERSONNEL AND ASSETS

All field operations require several types of structures throughout the mining process, including command centers, garages, maintenance facilities and workshops. The versatility and mobility of Big Top fabric structures make them ideal for each use.

BULK AND EQUIPMENT STORAGE

These weather-resistant fabric shelters are perfect for your warehousing and storage needs. You can also use them as temperature-controlled buildings or to stack overflow from manufacturing.



CUSTOMER SPOTLIGHT

Bechtel, Las Bambas, Peru

In the remote high elevations of the Andes Mountains in Peru, Bechtel needed areas for warehouse storage, fabrication out of the elements, locations to conduct routine preventative and corrective maintenance, and safe comfortable dining and office settings. Their timeframe was short and required a unique solution.

Big Top brought over 30 years of experience and created various structures some mounted on concrete slabs, some on dirt and most notably several were mounted on the shipping containers in which the structures were transported. This particularly unique foundation reduced the amount of steel used and created additional storage space. Installation times were minimal and allowed Bechtel to expand their operations quickly.



MINING & MINERAL

Protect. Produce. Grow.

HOW A BIG TOP BENEFITS YOU

EXTREMELY DURABLE

Used by the U.S. Military for decades, our proprietary tensioned fabric and steel framework enables Big Top structures to withstand high winds, heavy snow loads and whatever else Mother Nature throws at them. They have been rigorously tested across the globe in every climate imaginable and are recognized as the most durable fabric structures available on the market. We'll assist you in designing a structure that holds up to your application.

QUICK TO INSTALL

You need a new building and you probably need it now. A Big Top is a much quicker option than building a permanent structure and usually can be constructed in 4 or 5 days. This means you can keep your people working and, in doing so, avoid costly downtime and inefficiencies.

COMPLETELY PORTABLE

Big Top structures are completely mobile and can be easily relocated by rail, wheels or as a whole unit by crane. And if the day ever comes when you no longer need it, you can break it down just as easily as it went up and store it indefinitely. The steel frame is galvanized to keep it free from rust or corrosion no matter how long it's stored, and the fabric cover can be rolled or folded into a fraction of its outstretched size.

CLIMATE CONTROLLED AND VENTILATED

Rest assured that the environment inside a Big Top is ideal for your application. In most climates, Big Top structures maintain a comfortable, even temperature that varies between +/- 15 degrees of outside conditions. We'll help you accessorize your fabric structure with the exact ventilation, heating, cooling, lighting and electrical systems that will be suitable for your products, assets and employees.

HIGHLY CUSTOMIZABLE

Whether it's storing sensitive materials or accommodating thousands of people, we will work with you to design a solution that meets your needs. There's practically nothing we can't customize to your specifications, from doors and entryways, to HVAC, electrical, lighting, and eco-friendly options.

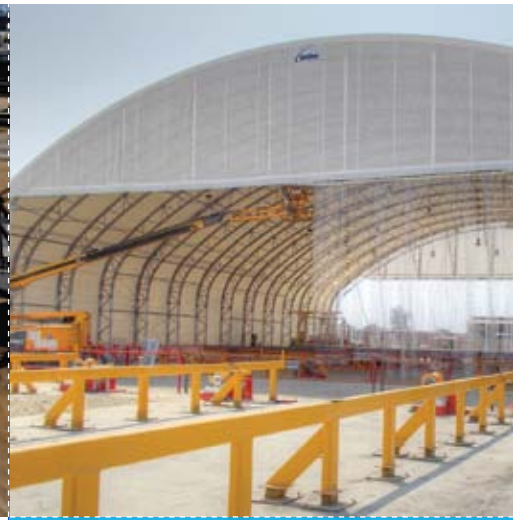
MORE COST-EFFICIENT

With a Big Top, you'll get more out of it than you'll ever put into it. For starters, fabric structures are much more affordable than traditional structures, up to 70%. But they'll also save you money in other ways. You can classify them as equipment, so you won't have to pay property taxes. You'll save on upkeep because they're maintenance-free. And, you can install the structure on practically any foundation, saving you time and money.





OIL & GAS



For over 30 years, Big Top has enabled clients to protect valuable assets, provide comfortable production environments and procure the resources needed to grow and prosper. Our custom-built fabric structures are designed to withstand the harshest conditions, while ensuring that your business needs are met, from shielding personnel on a remote site to protected equipment storage.

WHAT A BIG TOP PROTECTS

EXTRACTION AND PROCESSING

Extracting and processing oil and natural gas is a complex process and is often in remote locations. Accomplishing this in adverse weather conditions makes this even harder. A Big Top fabric structure will shield your personnel and equipment from the harshest elements. Not only are they an ideal option for barracks, mess halls and decontamination buildings, you can also use them as storage facilities for frac sand, chemicals, garages and maintenance centers. Because they're highly customizable and mobile, a Big Top can serve multiple purposes throughout the oil and gas drilling process and travel easily from site to site.

WAREHOUSING

Big Top structures are a versatile, cost effective solution for your growing warehousing needs. A Big Top structure can be customized to fit your application - climate control, lighting, electrical packages and many other options.

BULK STORAGE

Bulk storage, just by nature, requires a vast amount of space. Big Top structures utilize a proprietary tensioned fabric and steel framework, eliminating the need for bulky beams and columns that reduce storage space.

LUNCHROOMS

Big Top structures offer a cost effective, and rapidly deployable solution for lunch rooms and gathering areas for your staff and contractors. When the whistle blows, you can be assured that your team has a safe, comfortable place to congregate. Our structures have been used as mess halls and break areas by the U.S. military and private organizations for years.

OFFICES

When you need additional office space, you need an environment that's conducive to working, at a price that won't put you out of business. Guaranteed to cost less than a permanent structure, a Big Top structure is the perfect answer and 100% customizable to address all work comforts.

CUSTOMER SPOTLIGHT

Sonergy - Lagos Area, Nigeria

Battling high heat and heavy rains in the Lagos region of Nigeria, Sonergy needed a solution in which they could fabricate two sections of an offshore oil platform. During the six-month rainy season their employees would constantly have to stop work and cover sections of a project and repeat the sand blasting and paint process. Steel shot and steel grit needed to stay dry which was not possible in the rain. This was frustrating, expensive and inefficient.

Now, two 90' x 80' Big Top structures towering at 45' with large access end panels allow Sonergy to fabricate the massive platform sections and easily roll them out when complete. The sections are out of the rain and dry while workers are out of the sun and cooler. Big Top structures can withstand the steel abrasive media and contain it. Efficiency is up and Sonergy can now produce platform sections at an unprecedented rate.



OIL & GAS

Protect. Produce. Grow.

HOW A BIG TOP BENEFITS YOU

EXTREMELY DURABLE

Used by the U.S. Military for decades, our proprietary tensioned fabric and steel framework enables Big Top structures to withstand high winds, heavy snow loads and whatever else Mother Nature throws at them. They have been rigorously tested across the globe in every climate imaginable and are recognized as the most durable fabric structures available on the market. We'll assist you in designing a structure that holds up to your application.

QUICK TO INSTALL

You need a new building and you probably need it now. A Big Top is a much quicker option than building a permanent structure and usually can be constructed in 4 or 5 days. This means you can keep your people working and, in doing so, avoid costly downtime and inefficiencies.

COMPLETELY PORTABLE

Big Top structures are completely mobile and can be easily relocated by rail, wheels or as a whole unit by crane. And if the day ever comes when you no longer need it, you can break it down just as easily as it went up and store it indefinitely. The steel frame is galvanized to keep it free from rust or corrosion no matter how long it's stored, and the fabric cover can be rolled or folded into a fraction of its outstretched size.

CLIMATE CONTROLLED AND VENTILATED

Rest assured that the environment inside a Big Top is ideal for your application. In most climates, Big Top structures maintain a comfortable, even temperature that varies between +/- 15 degrees of outside conditions. We'll help you accessorize your fabric structure with the exact ventilation, heating, cooling, lighting and electrical systems that will be suitable for your products, assets and employees.

HIGHLY CUSTOMIZABLE

Whether it's storing sensitive materials or accommodating thousands of people, we will work with you to design a solution that meets your needs. There's practically nothing we can't customize to your specifications, from doors and entryways, to HVAC, electrical, lighting, and eco-friendly options.

MORE COST-EFFICIENT

With a Big Top, you'll get more out of it than you'll ever put into it. For starters, fabric structures are much more affordable than traditional structures, up to 70%. But they'll also save you money in other ways. You can classify them as equipment, so you won't have to pay property taxes. You'll save on upkeep because they're maintenance-free. And, you can install the structure on practically any foundation, saving you time and money.





SCHOOLS & GYMNASIUMS

For over 30 years, Big Top has enabled clients to protect valuable assets, provide comfortable production environments and procure the resources needed to grow and prosper. Our custom-built fabric structures are designed to withstand the harshest conditions, while ensuring that your needs are met, from classrooms to gymnasiums.

WHAT A BIG TOP PROTECTS

CLASSROOMS

Big Top structures can be erected quickly and affordably to help alleviate overcrowding. Because they're highly customizable, you can outfit them with climate control systems to ensure a comfortable learning environment throughout the school year.

SPORTING EVENTS AND ACTIVITIES

With its translucent ceiling, a Big Top structure is a natural fit to cover nearly any sport facility or event size. Artificial turf, solid floors and natural grass all work well under our structures, that can be customized with venting and HVAC systems to provide affordable comfort.

SPECIAL EVENTS

Using gymnasiums, auditoriums and cafeterias as venues for school events can be tough and sometimes impossible to facilitate. A Big Top fabric structure can be erected within a day to hold any event that arises, and easily broken down and stored until needed for your next event.

SCHOOL MATERIALS AND PROPERTY

Using valuable building space to store school assets reduces the amount of space needed for learning. A climate-controlled Big Top fabric structure is ideal for storing excess furniture, equipment and learning materials.

MAINTENANCE EQUIPMENT

Not only is maintenance work disruptive, it takes a lot of space to store the equipment used to perform these tasks. Erecting a large either open or climate-controlled Big Top structure away from your main buildings will shield your students from unwanted noise while protecting your equipment from the elements.

PLAYGROUNDS

Protecting your students from the sun and rain while still allowing them to get some fresh air is easy to accomplish if you erect a Big Top canopy structure over your playground. Because they're customizable, they're ideal even for the largest playground equipment.



CUSTOMER SPOTLIGHT

West Independent District School Board, West, TX

In 2013, an explosion occurred at the West Fertilizer Company storage and distribution facility in West, Texas. At least fifteen people were lost, more than 160 were injured, and more than 150 buildings were damaged or destroyed. One of the casualties of the explosion was the gymnasium at West High School. FEMA and the West Independent District School Board employed Huckabee Architects on August 8, 2013 to find a way to have a new gymnasium functional before the start of the school year on August 27, 2013.

Thankfully, Huckabee found Big Top. Ramping up production, Big Top built an 80' x 100' fully insulated and lit structure that was 36' tall in just 2 weeks. The project was finalized 3 days prior to its due date and West High school had an operational gym ready for the school year.



SCHOOLS & GYMNASIUMS

Protect. Produce. Grow.

HOW A BIG TOP BENEFITS YOU

EXTREMELY DURABLE

Our proprietary tensioned fabric and steel framework enables Big Top structures to withstand high winds, heavy snow loads and whatever else Mother Nature throws at them. They have been rigorously tested across the globe in every climate imaginable and are recognized as the most durable fabric structures available on the market. We'll assist you in designing a structure that holds up to your application.

QUICK TO INSTALL

You need a new building and you probably need it now. A Big Top is a much quicker option than building a permanent structure and usually can be constructed in 4 or 5 days. This means you can keep your people working and, in doing so, avoid costly downtime and inefficiencies.

COMPLETELY PORTABLE

Big Top structures are completely mobile and can be easily relocated by rail, wheels or as a whole unit by crane. And if the day ever comes when you no longer need it, you can break it down just as easily as it went up and store it indefinitely. The steel frame is galvanized to keep it free from rust or corrosion no matter how long it's stored, and the fabric cover can be rolled or folded into a fraction of its outstretched size.

CLIMATE CONTROLLED AND VENTILATED

Rest assured that the environment inside a Big Top is ideal for your application. In most climates, Big Top structures maintain a comfortable, even temperature that varies between +/- 15 degrees of outside conditions. We'll help you accessorize your fabric structure with the exact ventilation, heating, cooling, lighting and electrical systems that will be suitable for your products, assets and employees.

HIGHLY CUSTOMIZABLE

Whether it's storing sensitive materials or accommodating thousands of people, we will work with you to design a solution that meets your needs. There's practically nothing we can't customize to your specifications, from doors and entryways, to HVAC, electrical, lighting, and eco-friendly options.

MORE COST-EFFICIENT

With a Big Top, you'll get more out of it than you'll ever put into it. For starters, fabric structures are much more affordable than traditional structures, up to 70%. But they'll also save you money in other ways. You can classify them as equipment, so you won't have to pay property taxes. You'll save on upkeep because they're maintenance-free. And, you can install the structure on practically any foundation, saving you time and money.





SPORTS & EVENTS

For over 30 years, Big Top has enabled clients to protect valuable assets, provide comfortable production environments and procure the resources needed to grow and prosper. Our custom-built fabric structures are designed to withstand the harshest conditions, while ensuring that your business needs are met, from soccer games to large format public exhibits.

WHAT A BIG TOP PROTECTS

PLAYING FIELDS AND SURFACES FOR ALL SPORTS

TRAVELLING ART GALLERIES AND MUSEUM EXHIBITS

WALKWAYS LEADING TO AND AWAY FROM EVENTS

HOSPITALITY CENTERS

CONCESSION STANDS

FIRST AID CENTERS AND MEDICAL STAFF SHELTERS

SECURITY STAFF STATIONS

SOUVENIR STANDS

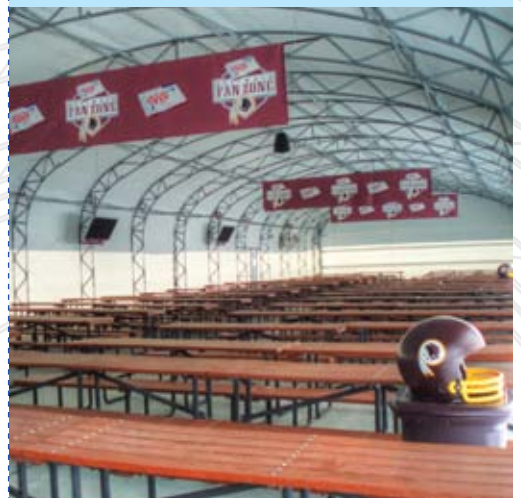


CUSTOMER SPOTLIGHT

FedExField, Washington Redskins, Landover, MD

FedExField, home to the Washington Redskins traditionally used A-frame lightweight structures for their extensive exterior hospitality services. After only a few years of wear it became readily apparent that the structures were not durable enough to withstand either the wind or snow loads during the winter months in Maryland. The VIP areas needed cover suited to their patrons.

They contacted Big Top and started with two custom colored structures back in '09, one stretching 120' and the other 180'. They now have a total of nine crimson colored structures dotting the exterior landscape of FedExField. The Big Top fabric structures are kept up year-round and have exceeded expectations. Their VIP's dine and socialize in the befitting covered indoor/outdoor areas.



SPORTS & EVENTS

Protect. Produce. Grow.

HOW A BIG TOP BENEFITS YOU

EXTREMELY DURABLE

Our proprietary tensioned fabric and steel framework enables Big Top structures to withstand high winds, heavy snow loads and whatever else Mother Nature throws at them. They have been rigorously tested across the globe in every climate imaginable and are recognized as the most durable fabric structures available on the market. We'll assist you in designing a structure that holds up to your application.

QUICK TO INSTALL

You need a new building and you probably need it now. A Big Top is a much quicker option than building a permanent structure and usually can be constructed in 4 or 5 days. This means you can keep your people working and, in doing so, avoid costly downtime and inefficiencies.

COMPLETELY PORTABLE

Big Top structures are completely mobile and can be easily relocated by rail, wheels or as a whole unit by crane. And if the day ever comes when you no longer need it, you can break it down just as easily as it went up and store it indefinitely. The steel frame is galvanized to keep it free from rust or corrosion no matter how long it's stored, and the fabric cover can be rolled or folded into a fraction of its outstretched size.

CLIMATE CONTROLLED AND VENTILATED

Rest assured that the environment inside a Big Top is ideal for your application. In most climates, Big Top structures maintain a comfortable, even temperature that varies between +/- 15 degrees of outside conditions. We'll help you accessorize your fabric structure with the exact ventilation, heating, cooling, lighting and electrical systems that will be suitable for your products, assets and employees.

HIGHLY CUSTOMIZABLE

Whether it's storing sensitive materials or accommodating thousands of people, we will work with you to design a solution that meets your needs. There's practically nothing we can't customize to your specifications, from doors and entryways, to HVAC, electrical, lighting, and eco-friendly options.

MORE COST-EFFICIENT

With a Big Top, you'll get more out of it than you'll ever put into it. For starters, fabric structures are much more affordable than traditional structures, up to 70%. But they'll also save you money in other ways. You can classify them as equipment, so you won't have to pay property taxes. You'll save on upkeep because they're maintenance-free. And, you can install the structure on practically any foundation, saving you time and money.





READY TO GET STARTED?

1-800-277-8677 • bigtopshelters.com

Address:

3255 N. US 19
Perry, Florida 32347 USA

Ph: 1-800-277-8677

Fax: 1-850-584-7713

International Phone:

+1-850-584-7786

Web:

bigtopshelters.com

Email:

sales@bigtopshelters.com

GSA Contract

#07F-9604G



Scan the code for more information
about Big Top Fabric Structures.



Agriculture | Aviation | Commercial + Industrial | Environmental | Government | Marine | Military | Mining + Mineral
Oil + Gas | Schools + Gymnasiums | Sports + Events